

Table Of Contents

1	Welcome	
1.1	What Is In The Box.....	3
1.2	Product Introduction	4
2	Getting Started	
2.1	Product Overview.....	5
2.2	What Is “Caddy”.....	6
2.3	Connect To Your Computer.....	6
2.4	System Requirements.....	7
3	How To Use The Utility CD?	
3.1	Contents of SSS-125U/F Utility CD.....	8
3.2	Load The Utility CD.....	8
3.3	About This CD.....	10
3.4	Install Acrobat Reader.....	10
3.5	User’s Guide.....	12
3.6	Install USB Driver.....	12
3.7	Install Software Utility.....	14
3.8	Go Back.....	19
3.9	Exit To Windows.....	19
4	How To Install SmartStor Driver?	
4.1	For Type: USB SSS-125U:.....	20
4.2	For Type: 1394a Firewire SSS-125F:.....	23
5	Install Acrobat Reader	
5.1	Acrobat Reader.....	24
6	Install Bundled Softwares	
6.1	For PC.....	25
6.1.1	Backer 5.03.....	25
6.1.2	Virtual Drive.....	26
6.1.3	MacDrive 2000.....	27
6.2	For Mac OS.....	30
6.2.1	Smarty Tools.....	30

7	How To Partition And Format New Hard Disk Drive(HDD)?	
7.1	Set Your HDD As “Fixed” Drive.....	31
7.2	For Windows 98/98SE/ME.....	34
7.2.1	Partition Your HDD.....	34
7.2.2	Format Your HDD.....	39
7.3	For Windows 2000.....	41
7.3.1	Partition And Format Your HDD.....	41
8	How To Use SmartStor SSS-125?.....	48
9	Unplug The SmartStor SSS-125	
9.1	For Type: USB SSS-125U.....	49
9.2	For Type: 1394a SSS-125F.....	50
9.3	Steps To Stop The Device.....	50
10	Limited Warranty	
10.1	Excluded Products And Problems.....	52
	Declaration.....	53
	Trademarks	
	Copyright	
	Disclaimer	
	FCC Notice	

1 Welcome

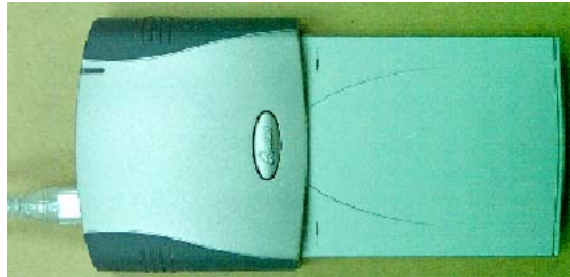
Congratulations for purchasing SmartStor (SSS-125). SmartStor is an external storage drive that allows the user to have portable storage (called ‘Caddy’) connected to your personal computer or NoteBook PC. Caddy is a small, pocket-sized storage case where you can store a 2.5” Hard Disk Drive. (please refer to section 2.2 for “What Is Caddy?”). Not only does it offer the convenience of pocket-sized portability, but also provides users fast access as well as flexibility of changing to different storage sizes, as compared with other external storage/backup devices.

1.1 What Is In The Box

The contents of your SSS-125 package are as follows:

USB		1394A(FireWire)	
USB Module	*1	1394 Module	*1
USB Cable	*1	1394 Cable	*1
CD(User’s Guide & Utilities)	*1	CD(User’s Guide & Utilities)	*1
Warranty Card		Warranty Card	*1
Quick Installation Guide	*1	Quick Installation Guide	*1
Power Adapter	*1		

1.2 Product Introduction



SmartStor SSS-125 delivers intelligent solutions for data storage. SmartStor SSS-125 provides the following features and benefit to you:

- Wide span of platforms
- Hot swappable
- Plug & play(no need to switch off your computer for connection)
- High performance & speed, unlimited capacity
- Interface: USB version 1.1 / 1394a FireWire
- Flexible and upgradeable storage in a compact size
- Easy data sharing and transferring
- Pocket-size design
- Ergonomically designed to fit easily in the palm of your hand

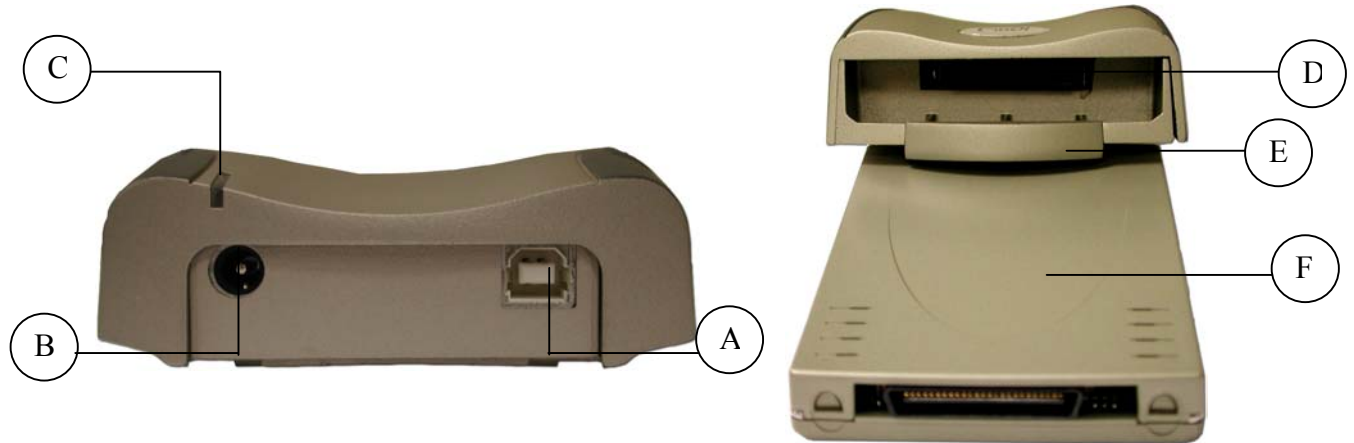
This new SmartStor SSS-125 storage solution provides a smart storage system for Small Medium Enterprises (SME), SOHO and end-users. A patented ergonomic & hot swappable design lets you control your system, install your drive or easily replace large capacity drives.

2 Getting Started

This chapter introduces SmartStor's components and how to connect it to your computer.

2.1 Product Overview

Type: USB



Type: FireWire



- A : USB Port
- B : 12V DC Jack
- C : Disk Status LED (Red / Green)
- D : Slot For Caddy (Refer To “What Is Caddy”)
- E : Holder For Caddy
- F : Caddy (Refer To “What Is Caddy”)
- G : FireWire port

2.2 What Is “Caddy”?

“Caddy” is a removable cartridge where a 2.5” Hard Disk Drive can be placed into. It supports a series of modular designed products, so you can connect it to FireWire and USB computer interfaces. In future, additional interfaces will also be available for you to easily connect more devices via industry standard interfaces.

2.3 Connect To Your Computer

2.3.1 Insert the Caddy into SmartStor. (Figure 2.3.1)



Figure 2.3.1

2.3.2 Plug in the cable (USB or FireWire) connector into SmartStor (Figure 2.3.2)

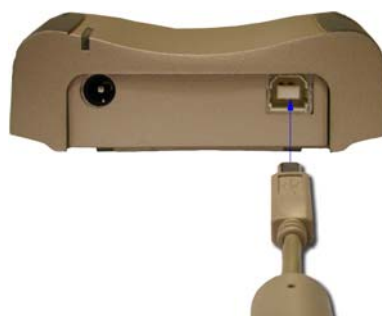


Figure2.3.2

2.3.3 If you are using SmartStor for the first time, **DO NOT plug the cable to your computer. Install the USB driver and bundle software first.**(Please refer to section 4,5 and 6). After you have installed those softwares, plug the other end of the cable into the connecting port on your computer.(Figure2.3.3)



Figure2.3.3

2.4 System Requirements

The minimum system requirements for using the SmartStor are as follows:

- Any PC/AT-compatible computer, notebook computer or Mac computer
- OS: Windows 98/98SE, Windows ME, Windows 2000, Mac O.S 8.6 or above
- A USB 1.1 / IEEE 1394a FireWire socket

3 How To Use The Utility CD?

3.1 Contents of SSS-125U/F Utility CD:

\Acrobat	Contains Acrobat Reader 5.0 files.
\Windows\USB 1.1 Driver	Contains USB driver files for Win98 & Win98 SE computer.
\Mac\USB 1.1 Driver	Contains USB driver files for Macintosh computer.
\Windows\Backer5	Contains Backer 5.03 utility files.
\Windows\MacDrive 2000	Contains MacDrive 2000 utility files.
\Windows\Virtual Drive	Contains Virtual CD 6.11 utility files.
\Mac\SmartyTools\Firewire HDD Installer	Contains Mac Hard Disk Master utility files.(For Macintosh computer)
\User Guide	Contains User's Guide document files(PDF format) for 125U/F

Note: If the function of “AutoRun” does not work in your Windows, please refer to chapter 6 to install the USB driver and bundled softwares

3.2 Load The Utility CD

- 3.2.1 Insert the utility CD into your CD-ROM.
- 3.2.2 With the autorun features supported, you will see your system loads the first page of the utility CD automatically.
(Figure 3.2.2)



Figure 3.2.2

3.2.3 Click and select the language at the left.

3.2.4 You will see the following shown on the screen(Figure 3.2.4):

- About This CD
- Acrobat Reader
- User's Guide
- USB Driver
- Software Utility
- Go Back

A description of this CD is shown on the left side.



Figure 3.2.4

3.2.5 By clicking on each item, you will see a message will appear at the right side of the page to explain the functions of the relevant item. You can scroll down to view the continuing messages.

3.3 About This CD

3.3.1 Click on “About This CD”. You will see a welcome message(Figure 3.3.1):



Figure 3.3.1

3.4 Install Acrobat Reader

3.4.1 As the user's guide is in PDF format, you have to install Acrobat Reader first in order to read the user guide.

3.4.2 Click “Acrobat Reader”. You will see a message with the description of Acrobat Reader on the right. Click “Install” button under the message and system will automatically install Acrobat Reader.

3.4.3 You will see a welcome message of Acrobat Reader. Click “Next”.(Figure 3.4.3)

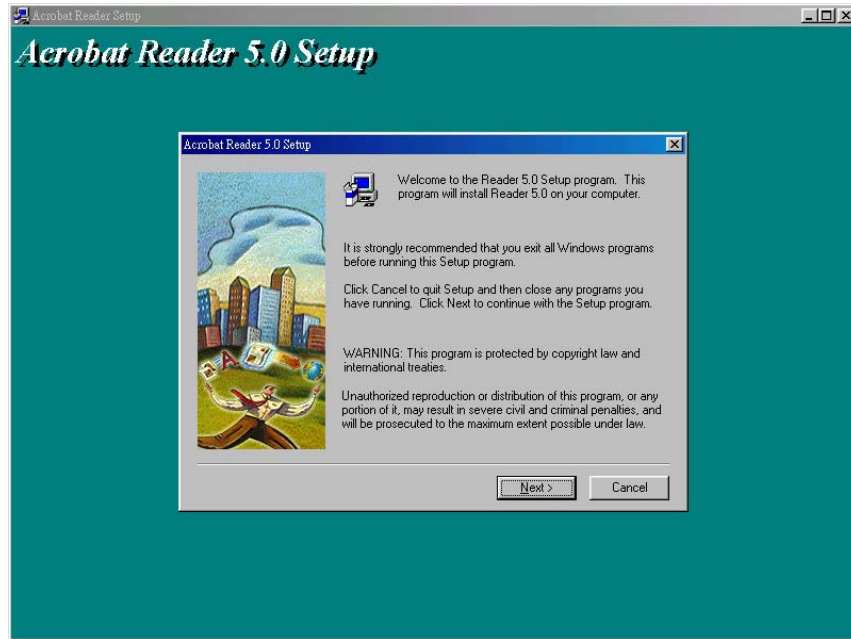


Figure 3.4.3

3.4.4 Select the directory where you want to install the Acrobat Reader by clicking “browse”. Click “Next”.(Figure 3.4.5)

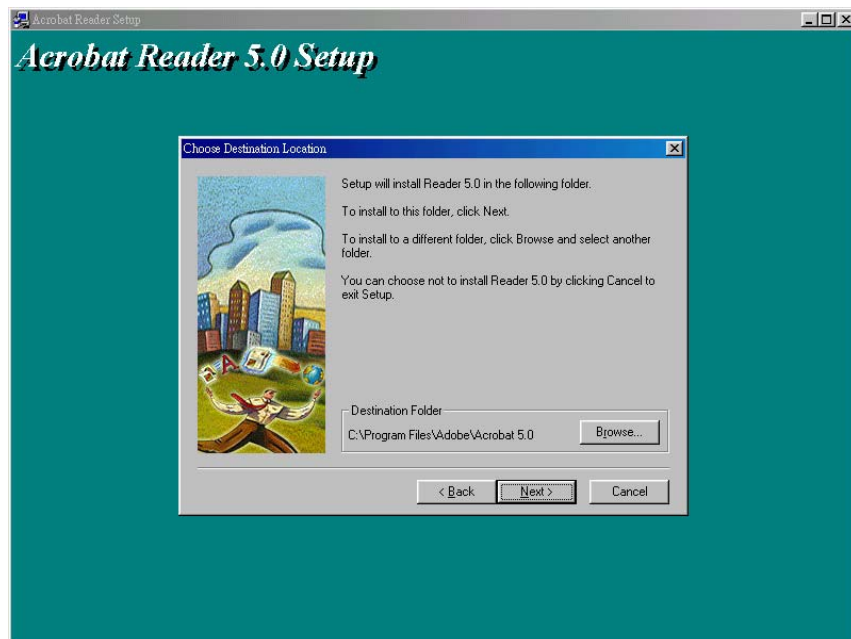


Figure 3.4.4

3.4.5 Install Finished. Click “OK” .(Figure 3.4.5)



Figure 3.4.5

3.4.6 Restart your computer.

3.5 User's Guide

- 3.5.1 The user's guide is in PDF format guides the user on the software/drivers installation and how to use SmartStor products. In addition, it also records the features and system requirements of SmartStor products.
- 3.5.2 Click “User's Guide”. A message with description of user's guide is shown on the right. Click “View” button to load the user's guide.

3.6 Install USB Driver

- 3.6.1 You have to install the USB driver if you are using SmartStor SSS125U on Win 98/ 98SE/Mac OS 8.6 or above.

For Win 98/98SE:

- 3.6.2 Click “USB Driver” and click “Install” button under the message. You will see a welcome message. Click “Next”. (Figure 3.6.2)

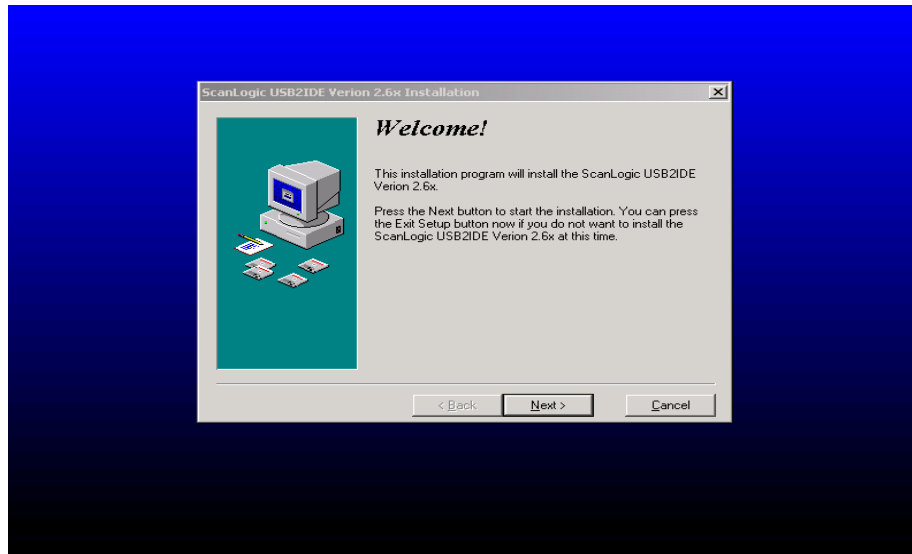


Figure 3.6.2

3.6.3 Ready to install! Click “Next”.(Figure 3.6.3)

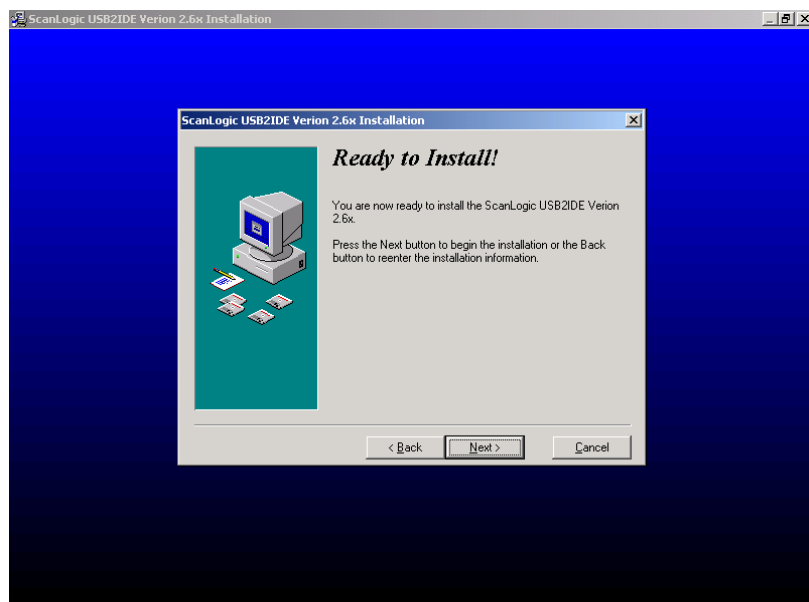


Figure 3.6.3

3.6.4 Installation Completed. Click “Finish” and reboot your system.(Figure 3.6.4)

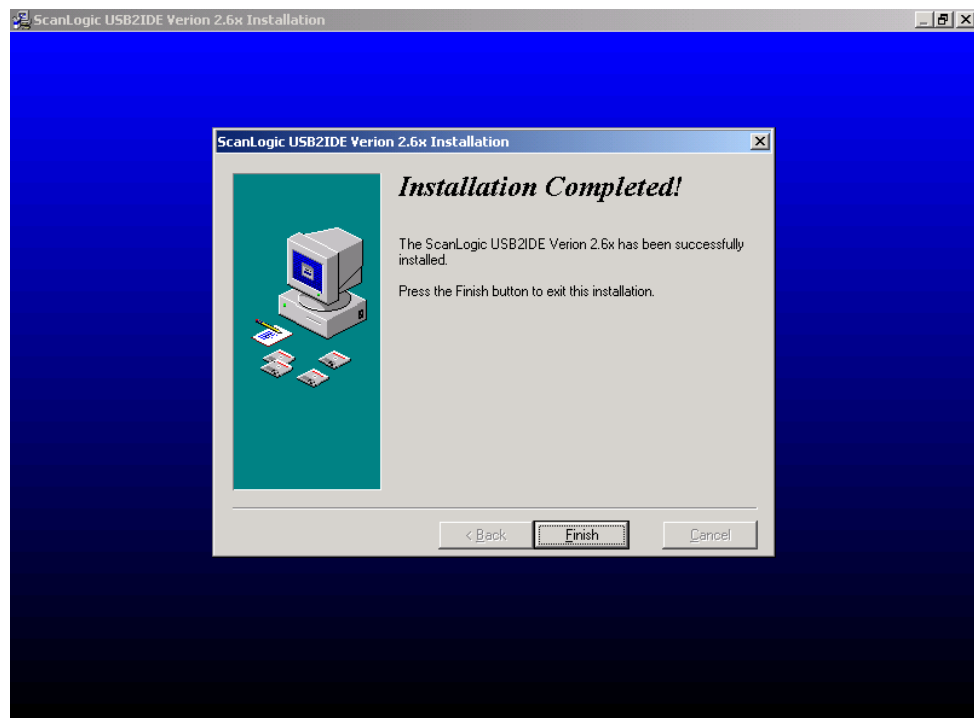


Figure 3.6.4

3.7 Install Software Utility

- 3.7.1 The Utility CD comes with three bundled softwares for PC: backer5, Virtual Drive, MacDrive2000 and one software for Macintosh: Smarty Tools.
- 3.7.2 Click “Software Utility”. You will have 3 selections(For PC):
- Backer5
 - Virtual Drive
 - MacDrive2000

Each of them will have a message that explains their functions.(Figure 3.7.2). After you have installed the softwares, please refer to the “Help” menu to learn how to use these softwares.

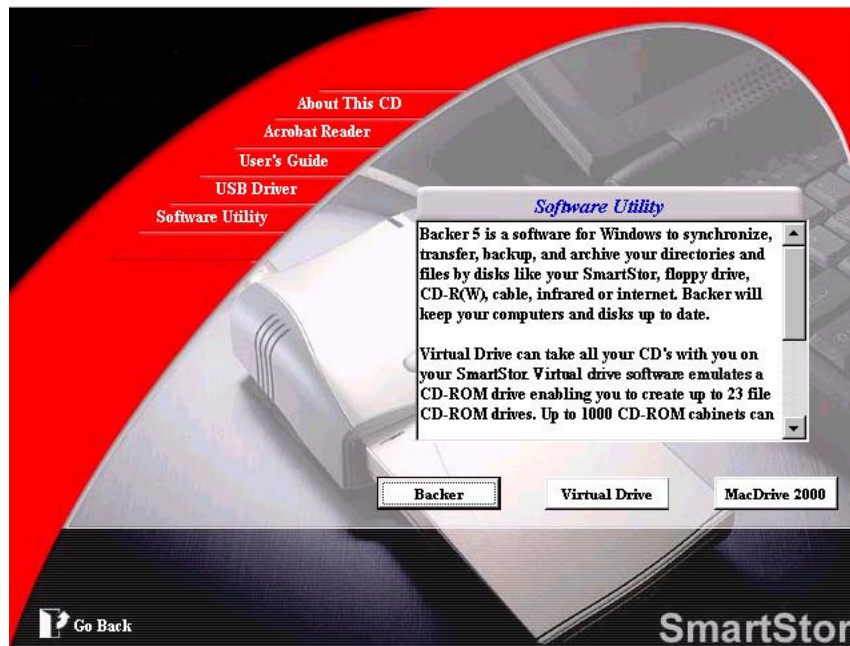


Figure 3.7.2

3.7.3 For PC:

3.7.3.1 Backer5

3.7.3.1.1 Backer5 is a software for windows to synchronize, transfer, backup and archive your directories and files by disks like your SmartStor, floppy drive, CD-R(W),cable or internet.

3.7.3.1.2 Click “Backer” button to read the message about Backer. Click “Install” to install Backer.

3.7.3.1.3 You will see a welcome message. Click “Next”.(Figure 3.7.3.1.3)

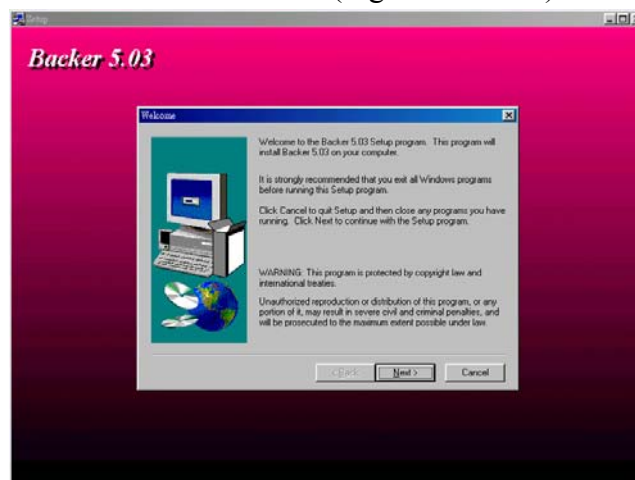


Figure 3.7.3.1.3

3.7.3.1.4 Select the directory where you want to install the backer 5.03 by clicking “browse”. Click “Next”.(Figure 3.7.3.1.4)

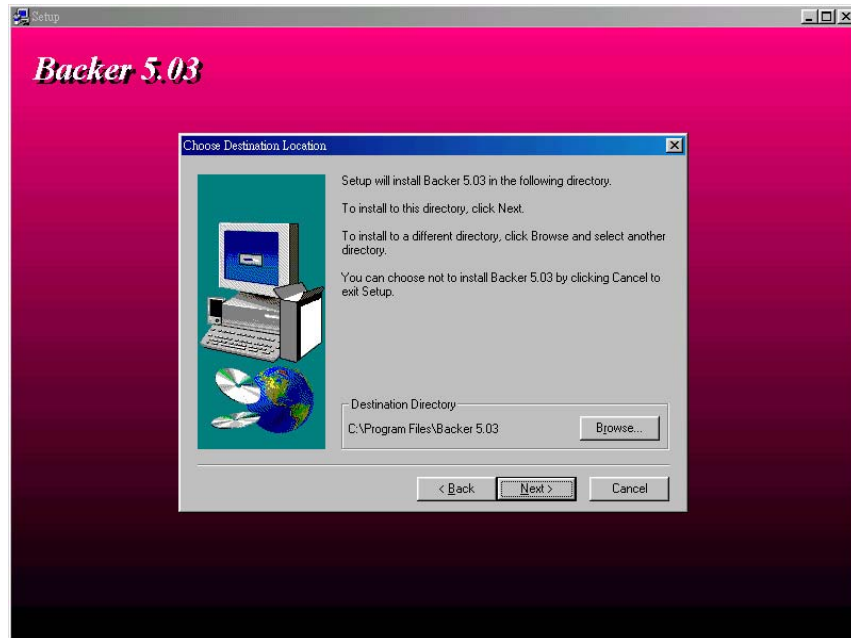


Figure 3.7.3.1.4

3.7.3.1.5 Select the program folder. Click “Next”.(Figure 3.7.3.1.5)

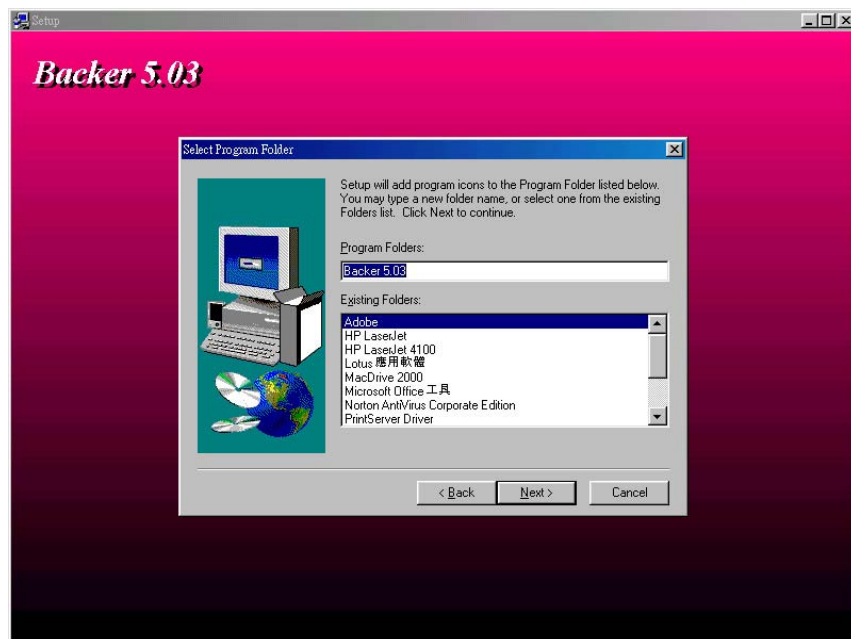


Figure 3.7.3.1.5

3.7.3.1.6 Installation complete! Click “Finish” to launch the program.(Figure 3.7.3.1.6)

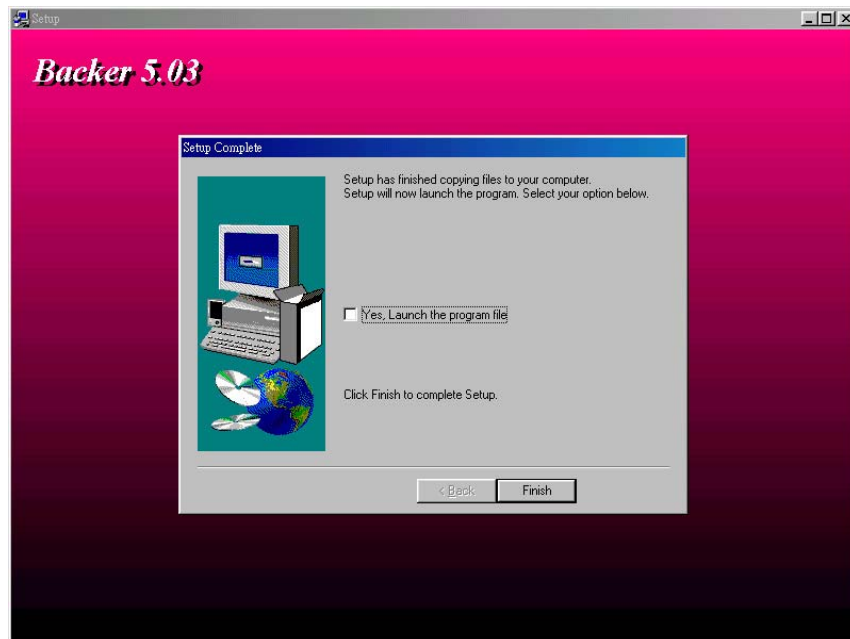


Figure 3.7.3.1.6

3.7.3.2 Virtual Drive

3.7.3.2.1 Virtual drive software emulates a CD-ROM drive enabling you to create up to 23-file CD-ROM drives.

3.7.3.2.2 Click “Virtual Drive” to read the message. Click “Install” to install Virtual Drive.

3.7.3.2.3 Click “I accept” to agree on the license.(Figure 3.7.3.2.3)

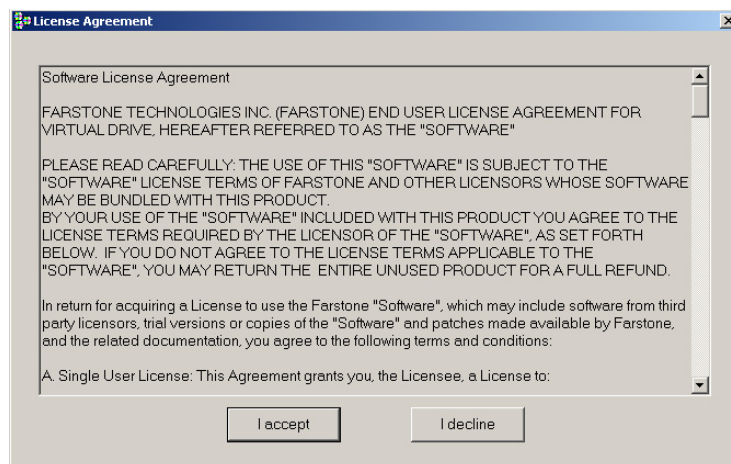


Figure 3.7.3.2.3

3.7.3.2.4 You will see a welcome message. Click “Continue”.(Figure 3.7.3.2.4)

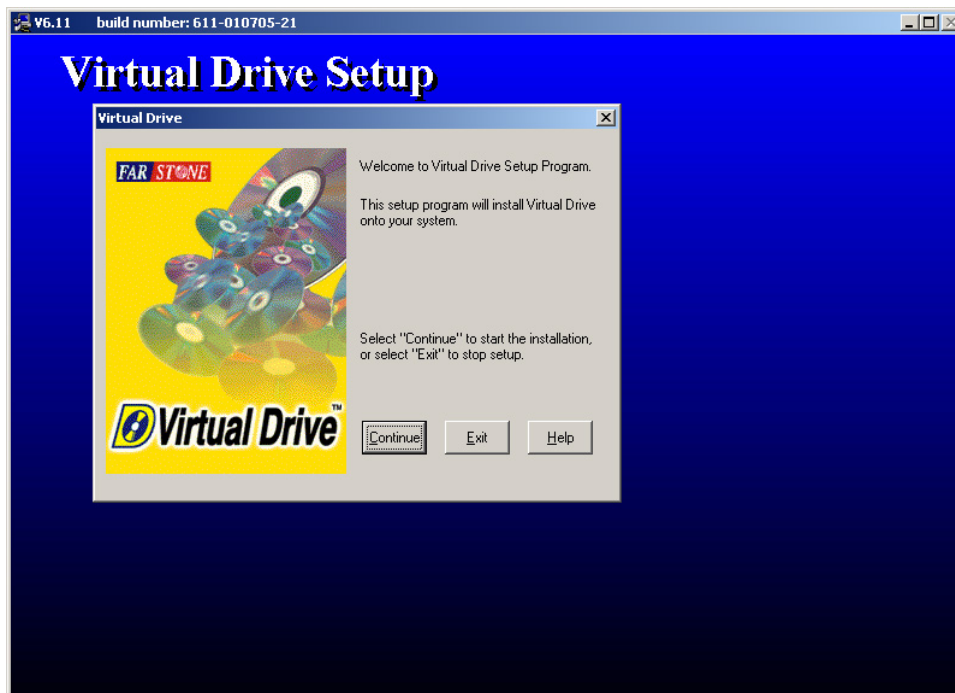


Figure 3.7.3.2.4

3.7.3.2.5 Select the directory where you want to install the virtual drive. Click “Continue”.(Figure 3.7.3.2.5)

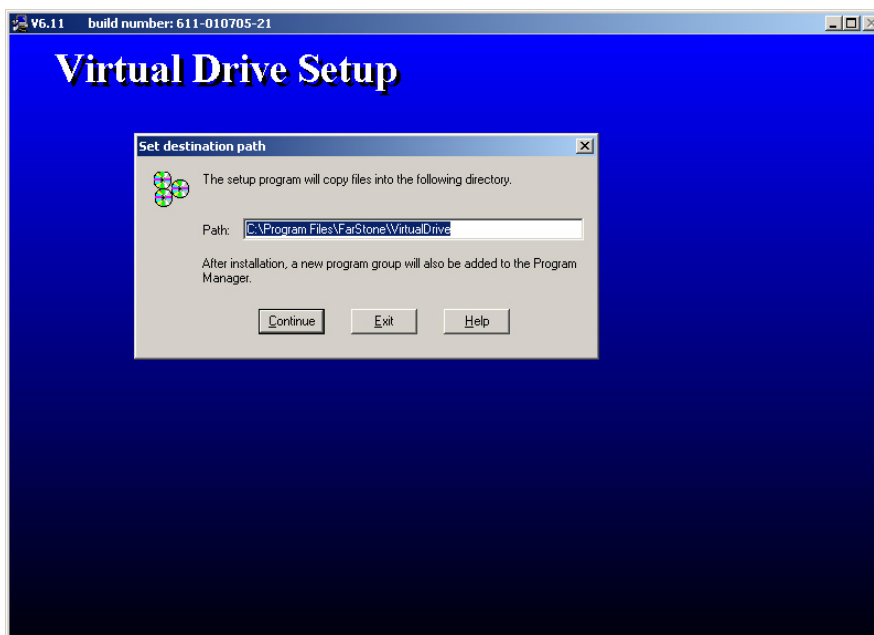


Figure 3.7.3.2.5

3.7.3.2.6 Installation complete! Click “Restart Now” to reboot your system.(Figure 3.7.3.2.6)



Figure 3.7.3.2.6

3.7.3.3 MacDrive2000

3.7.3.3.1 MacDrive2000 let user access the Mac format files in Windows OS.

3.7.3.3.2 Click “MacDrive 2000” to read the message. Autorun cannot directly install “MacDrive 2000”. To install MacDrive2000, please refer to Section 6.1.3.

3.8 Go Back

3.8.1 Click “Go Back” and back to the first page of the utility CD.

3.9 Exit To Windows

3.10.1 Click “Exit To Windows” to close the page of Utility CD.

4. How To Install SmartStor Driver?

Please refer to the following table to check if you need to install a driver for using SmartStor with your O.S.

Operating System	SSS 125U	SSS 125F
Win95	X	X
Win95_OSR2	WinUSB driver provided by the CD	X
Win98	WinUSB driver provided by the CD	X
Win98_SE	WinUSB driver provided by the CD	Built-in support from OS
Win_ME	Built-in support from OS	Built-in support from OS
Win_NT	X	X
Win_2000	Built-in support from OS	Built-in support from OS
Win_XP	Built-in support from OS	Built-in support from OS
MAC_OS(9.1 and above)	Built-in support from OS	Built-in support from OS
MAC_OS(below 9.1)	USB2IDE driver provided by the CD	Built-in support from OS

X: Do Not Support

4.1 For Type: USB SSS-125U:

4.1.1 For Windows 98/98SE

If you wish to operate SSS-125U under Windows 98/98 SE, you will need to install the driver from the utility CD. There are 3 ways to install the USB driver:

4.1.1.1 Direct Install from the utility CD.(Please refer to section 3.6)

4.1.1.2 Insert the utility CD into the CD-ROM of your PC.

4.1.1.2.1 Open “My Computer”, double click to open the drive of your CD-ROM.

4.1.1.2.2 Double click the folder \Windows\USB 1.1 Driver.(Figure 4.1.1.2.2)



Figure 4.1.1.2.2

4.1.1.2.3 Double click “setup.exe”.(Figure 4.1.1.2.3)



Figure 4.1.1.2.3

4.1.1.2.4 Repeat steps 3.6.2~ 3.6.4.

4.1.1.3 Run the installation from “Start” menu.

4.1.1.3.1 Choose “Run” from the “Start” menu.

4.1.1.3.2 Type <CD-ROM drive>:\WinUSB\setup.exe

(Figure 4.1.1.3.2)

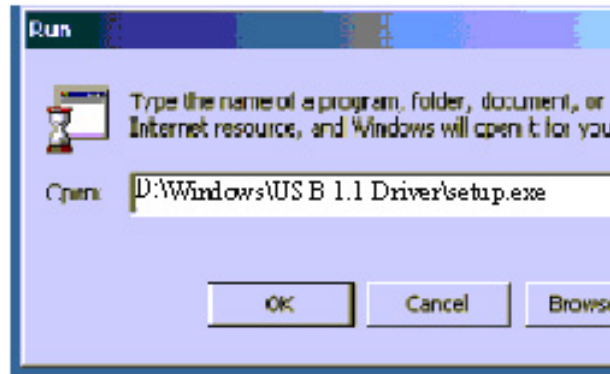


Figure 4.1.1.3.2

4.1.1.3.3 Repeat steps 3.6.2~ 3.6.4.

4.1.2 For Windows 2000/ME:

4.1.2.1 You do not have to install USB driver if you are using SSS-125U on windows 2000/ME.

4.1.3 For Mac OS(9.0 and below):

4.1.3.1 Insert the utility CD into your CD-ROM.

4.1.3.2 Double click and open the CD “125UF CD” on your desktop.

4.1.3.3 Double click and open folder “MacUSB”.

4.1.3.4 Drag the icon “USB2IDE.hqx” to your desktop.

4.1.3.5 Drag icon” USB2IDE.hqx” to “stuffit expander”(please refer to the note below) for decompressing the file.

Note: If you have not installed “Stuffit Expander”, hold “Command” Key and press “F” key, type “stuffit expander” to search, then double click to install the application.

- 4.1.3.6 After USB2IDE.hqx is unzipped, you will see an icon
“USB2IDEDriver.2f30”. Double click to install.(Figure 4.1.3.6)

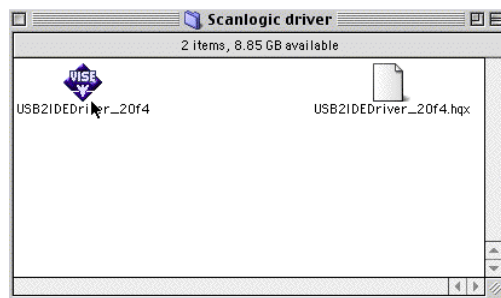


Figure 4.1.3.6

- 4.1.3.7 Click the “install” button for installation.(Figure 4.1.3.7)

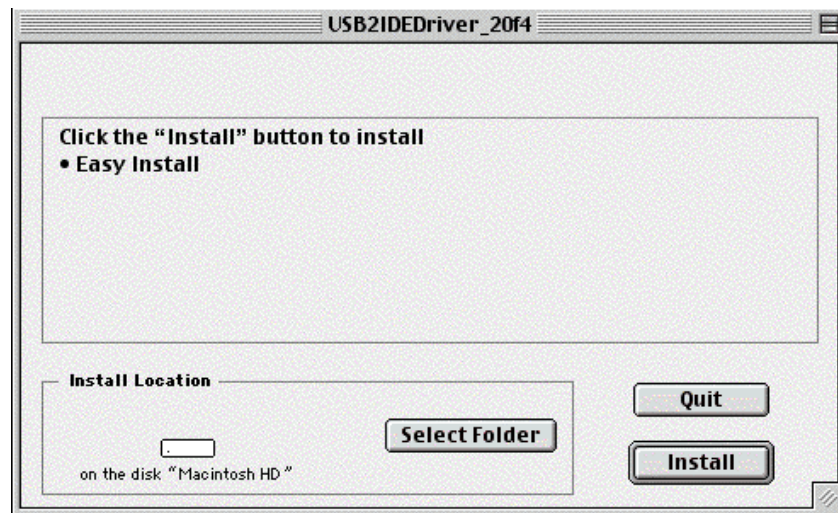


Figure 4.1.3.7

4.1.3.8 When the installation is successful, click the “Quit” button to exit installation.(Figure 4.1.3.8)



Figure 4.1.3.8

4.2 For Type: 1394a Firewire SSS-125F:

4.2.1 For Windows 98/98SE/2000/ME, Mac OS 8.6 or above

It is not necessary to install a driver into the OS, since all the required drivers have already been installed upon the installation of the 1394 Firewire interface card into your computer.

5. Install Acrobat Reader

5.1 Acrobat Reader:

You have to install Acrobat Reader in order to view the user's guide.

There are 2 ways to install Acrobat Reader:

5.1.1 Direct install:

5.1.1.1 Please follow the instructions in section 3.4.

5.1.2 Install From Utility CD:

5.1.2.1 Insert utility CD in to your CD-ROM.

5.1.2.2 Double click and open the drive of your CD-ROM.

5.1.2.3 Double click folder \Acrobat.(Figure 5.1.2.3)

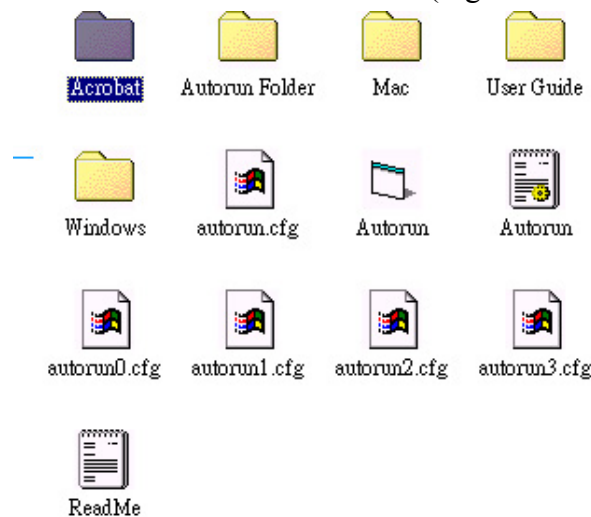


Figure 5.1.2.3

5.1.2.4 Double click "Windows Acrobat Reader.exe" to install.(Figure 5.1.2.4)



Figure 5.1.2.4

5.1.2.5 Repeat Steps 3.4.3~3.4.6

6. Install Bundled Softwares

6.1 For PC:

6.1.1 Backer 5.03:

Backer5 is a software for windows to synchronize, transfer, backup and archive your directories and files by disks like your SmartStor, floppy drive, CD-R(W),cable or internet. Backer will keep you computer and disks up to date.

There are 2 ways to install backer 5.03:

6.1.1.1 Direct install:

6.1.1.1.1 Please follow the instructions in section 3.7.3.1

6.1.1.2 Install from Utility CD:

6.1.1.2.1 Insert utility CD in to your CD-ROM.

6.1.1.2.2 Double click and open the drive of your CD-ROM.

6.1.1.2.3 Double click folder \Windows\Backer5(Figure 6.1.1.2.3)

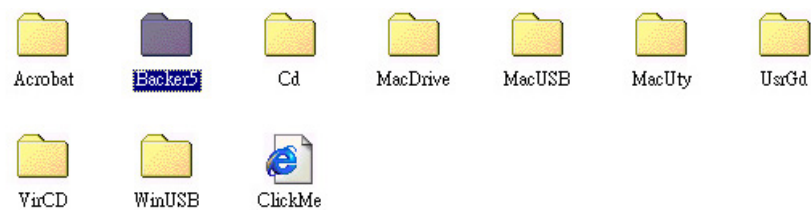


Figure 6.1.1.2.3

6.1.1.2.4 Double click “setup.exe” to install.(Figure 6.1.1.2.4)



Figure 6.1.1.2.4

6.1.1.2.5 Follow the steps in section 3.7.3.1.3 ~ 3.7.3.1.6.

6.1.2 Virtual Drive:

Virtual drive can take out all your CD's with you on your SmartStor. Virtual drive software emulates a CD-ROM drive enabling you to create up to 23-file CD-ROM drives. Up to 1000 CD-ROM cabinets can be created and run from any of the files CD-ROM drive.

There are 2 ways to install virtual drive:

6.1.2.1 Direct install:

6.1.2.1.1 Please follow the instructions in section 3.7.3.2

6.1.2.2 Install from Utility CD:

6.1.2.2.1 Insert utility CD in to your CD-ROM.

6.1.2.2.2 Double click and open the drive of your CD-ROM.

6.1.2.2.3 Double click folder \WindowsVirtual Drive.(Figure 6.1.2.2.3)



Figure 6.1.2.2.3

6.1.2.2.4 Double click “setup.exe” to install.(Figure 6.1.2.2.4)

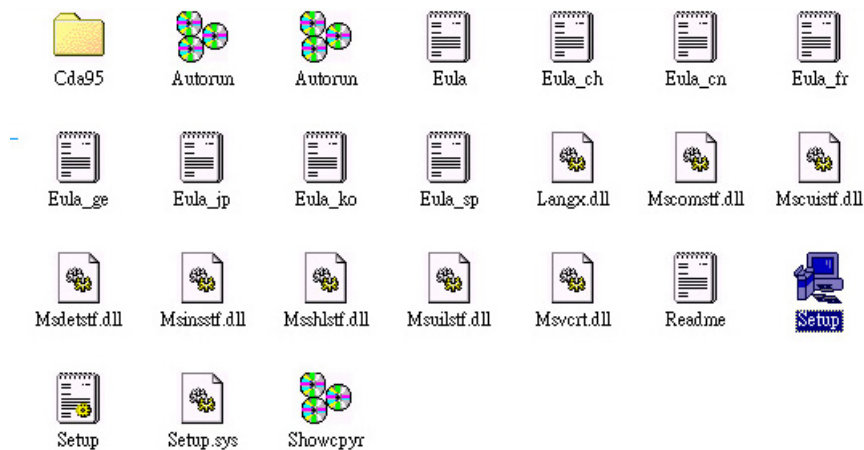


Figure 6.1.2.2.4

6.1.2.2.5 Follow the steps in section 3.7.3.2.3 ~ 3.7.3.2.6

6.1.3 MacDrive2000:

MacDrive2000 let user access the Mac format files in Windows OS. It is a simple way to share your information between Windows and Mac OS. You can even use MacDrive 2000 to format Mac disk on Windows OS.

6.1.3.1 Install from Utility CD:

6.1.3.1.1 Insert utility CD in to your CD-ROM.

6.1.3.1.2 Double click and open the drive of your CD-ROM.

6.1.3.1.3 Double click folder \Windows\MacDrive 2000.(Figure 6.1.3.1.3)



Figure 6.1.3.1.3

6.1.3.1.4 Double click “MacDrive.exe” to install.

6.1.3.1.5 You will see an installation wizard pop out on the screen. Click “Install MacDrive2000”.(Figure 6.1.3.1.5)

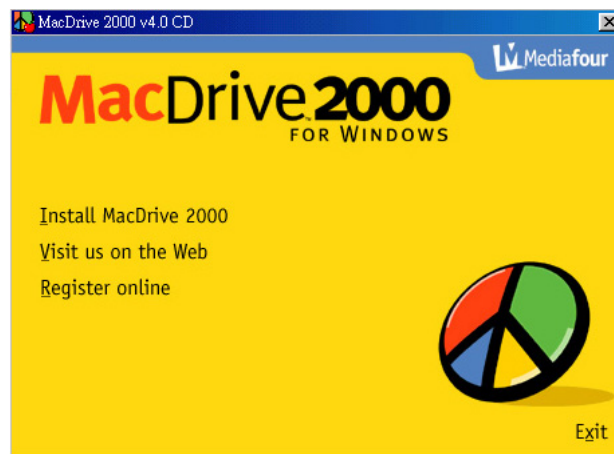


Figure 6.1.3.1.5

- 6.1.3.1.6 You will see a welcome message. Click “Next”.
(Figure 6.1.3.1.6)

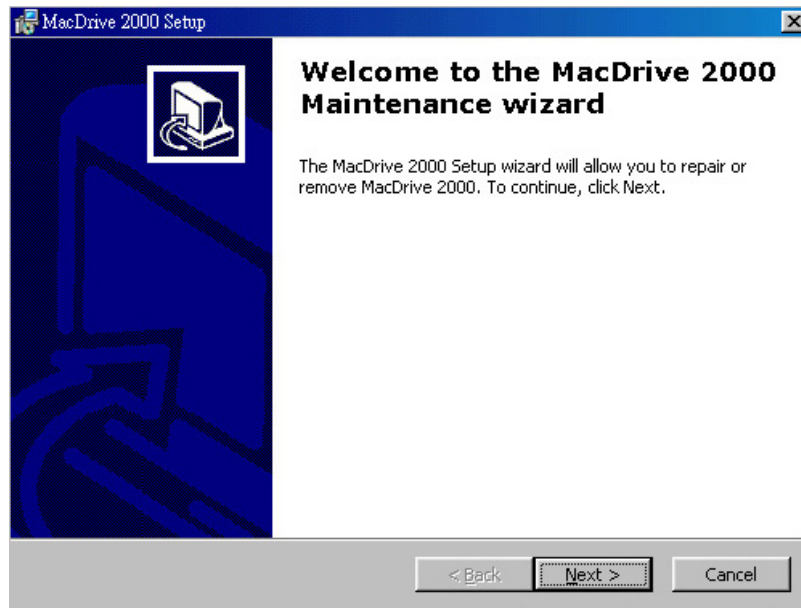


Figure 6.1.3.1.6

- 6.1.3.1.7 Select “I accept the term...” and click “Next” to accept the license.(Figure 6.1.3.1.7)

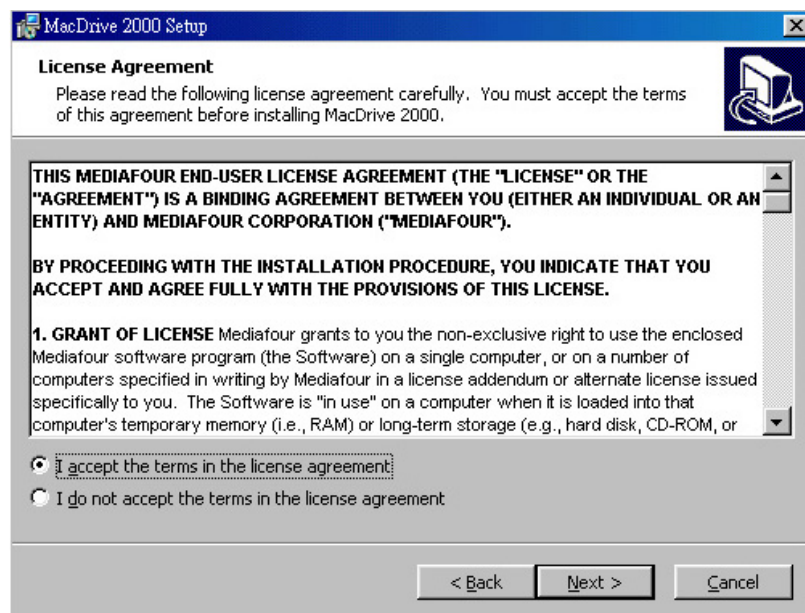


Figure 6.1.3.1.7

6.1.3.1.8 Select the directory where you want to install your MacDrive 2000 by clicking “Change”. Click “Next”.(Figure 6.1.3.1.8)

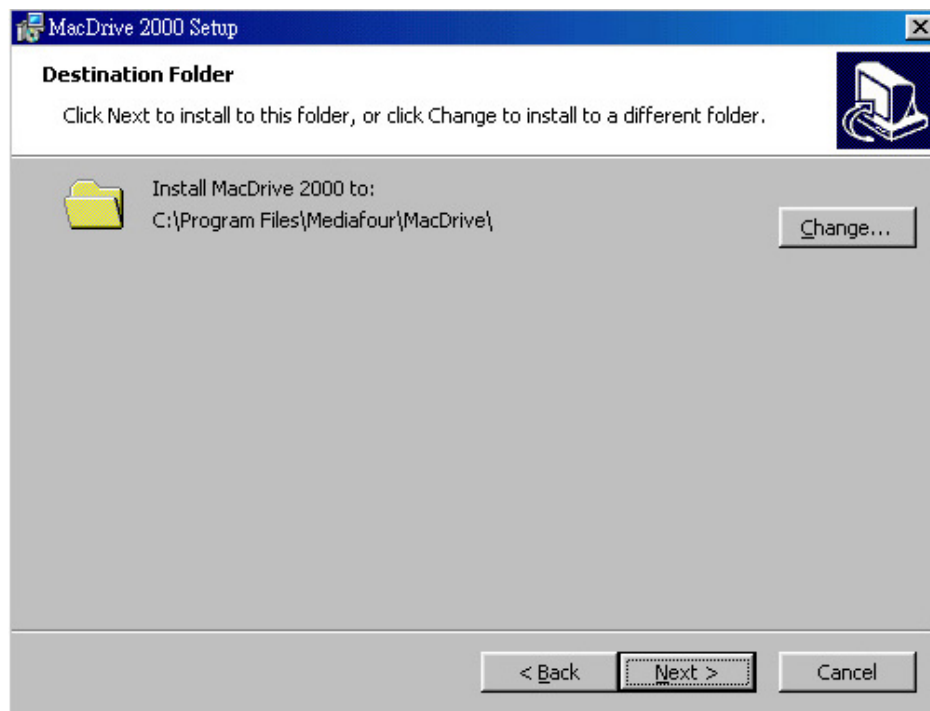


Figure 6.1.3.1.8

6.1.3.1.9 Click “Install” to start the installation.(Figure 6.1.3.1.9)

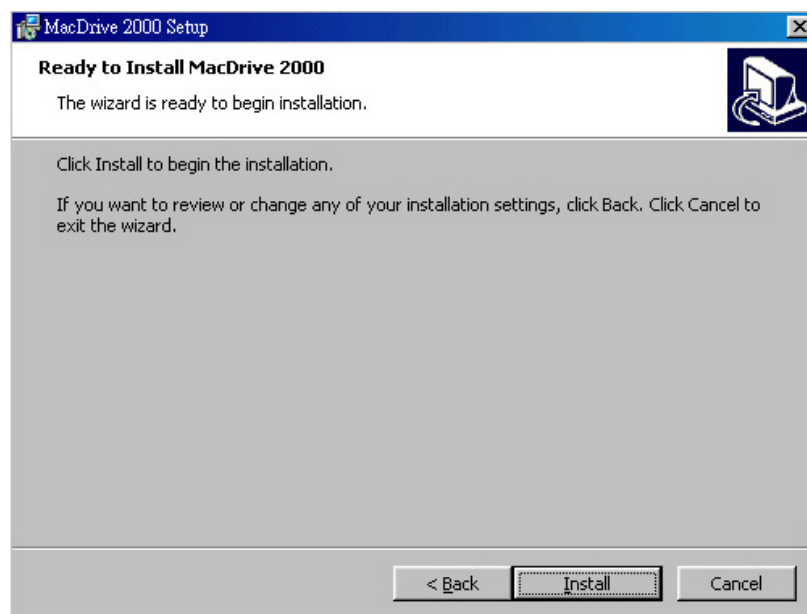


Figure 6.1.3.1.9

6.1.3.1.10 Installation complete! Click “OK”.(Figure 6.1.3.1.10)

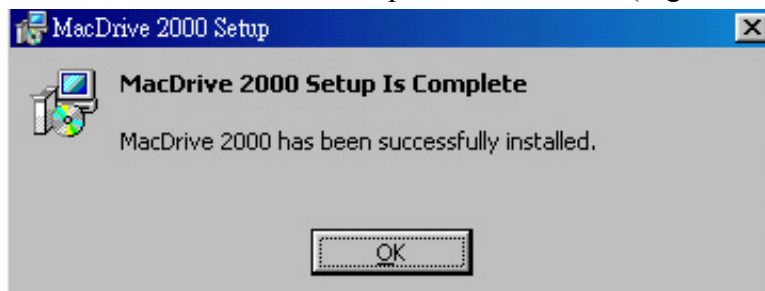


Figure 6.1.3.1.10

6.1.3.1.11 Click “Yes” to restart your computer.(Figure 6.1.3.1.11)

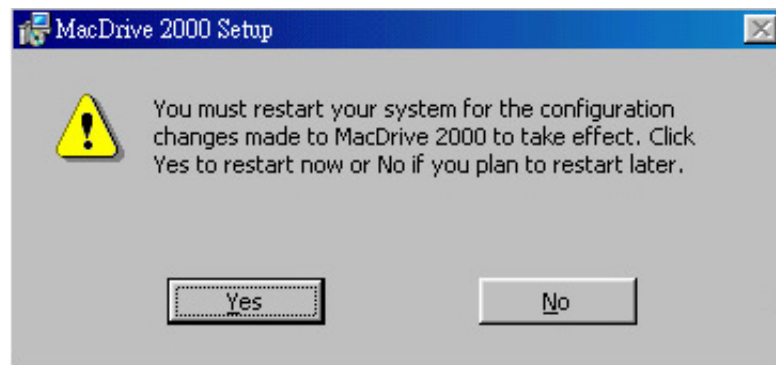


Figure 6.1.3.1.11

6.2 For Mac OS:

6.2.1 Smarty Tools:

Smart Tools let user use/access the Hard Disk Drive that have been formatted in Windows on Mac OS.(For 1394a Firewire only)

To install Smarty Tools:

- 6.2.1.1 Insert the Utility CD into your CD-ROM.
- 6.2.1.2 Double click and open the CD “125UF CD” on your desktop.
- 6.2.1.3 Double click to open folder \Mac\Smarty Tools.
- 6.2.1.4 Double click “Firewire HDD Installer” to start the installation.
- 6.2.1.5 Follow the instructions on the screen to install.
- 6.2.1.6 After installed, please refer to the “Help” menu to learn how to use this software.

Note: If you have not plugged the USB/Firewire cable into your computer, you may do so after you have installed all the drivers and soft wares.(please refer to Section 2.3.3)

7. How To Partition And Format New Hard Disk

Drive (HDD)?

If you are using a new hard disk drive, you have to partition and format your HDD.

Important(For Windows 98SE Only):

Before you start to partition your HDD, please download and install the plug and play storage supplement softwares from the following URL:

http://www.microsoft.com/windows98/downloads/contents/wurecommended/s_wufeatured/1394/license.asp

After installed this application, you should see an “Eject or Unplug Hardware Icon” appear at the bottom right of your task bar.(Please also refer to section 9.3.1).



7.1 Set Your HDD As “Fixed” Drive:

- 7.1.1 Open “My Computer”, check if you can see the drive of your HDD in SmartStor.
- 7.1.2 If you cannot see the drive, it means your HDD in your SmartStor is set to be ‘Fixed’ and it has not been partitioned yet. Proceed to steps 7.2 or 7.3 to partition the HDD.
- 7.1.3 If you see an additional drive(ex: D) labeled with “Removable”, please set it as “Fixed” drive.

7.1.3.1 In “My Computer”, right click and select “Property”.(Figure 7.1.3.1)

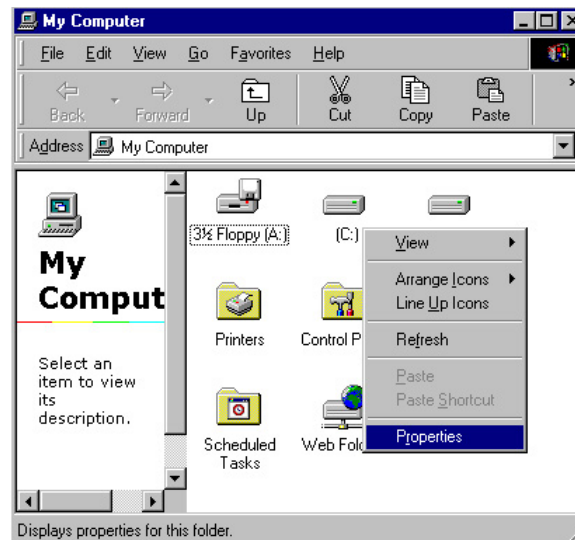


Figure 7.1.3.1

7.1.3.2 Select the tab with “Device Manager”.(Figure 7.1.3.2)

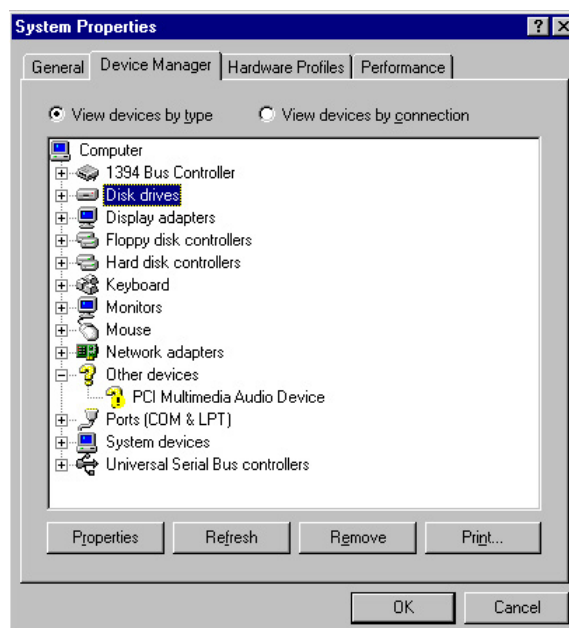


Figure 7.1.3.2

7.1.3.3 Double click on “Disk drives”, you should see your HDD in SmartStor(The name of the drive is depend on the HDD you are using).(Figure 7.1.3.3)

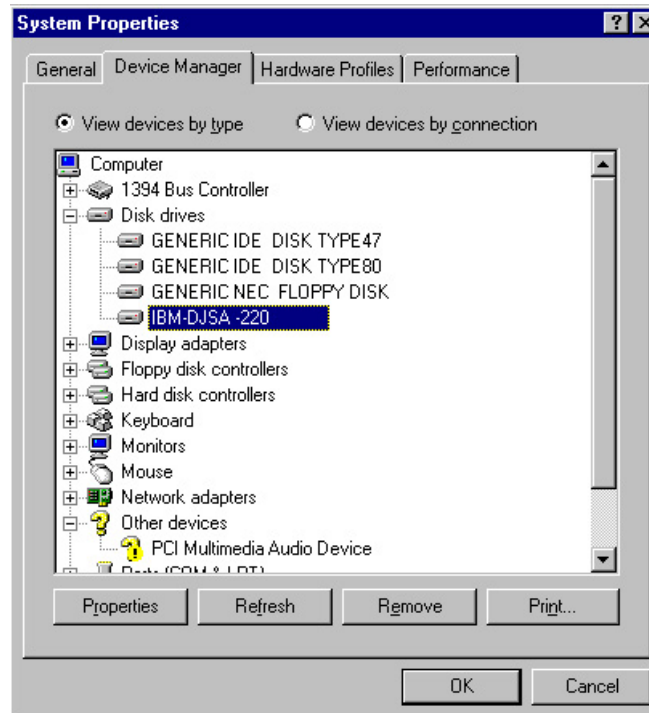


Figure 7.1.3.3

- 7.1.3.4 Select the HDD in SmartStor, select “Properties”.
 - 7.1.3.5 Select the tab “Settings”.
 - 7.1.3.6 Under option, do not tick on “Removable”. Click “OK”.
- (Figure 7.1.3.6)

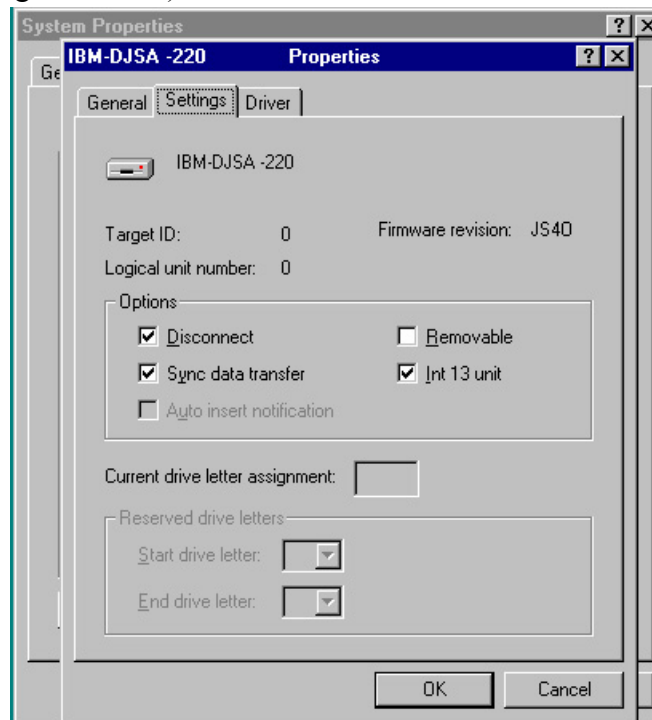


Figure 7.1.3.6

7.2 For Windows 98/98SE/ME

7.2.1 Partition Your HDD:

7.2.1.1 On “Start” menu, click “Run”.(Figure 7.2.1.1)

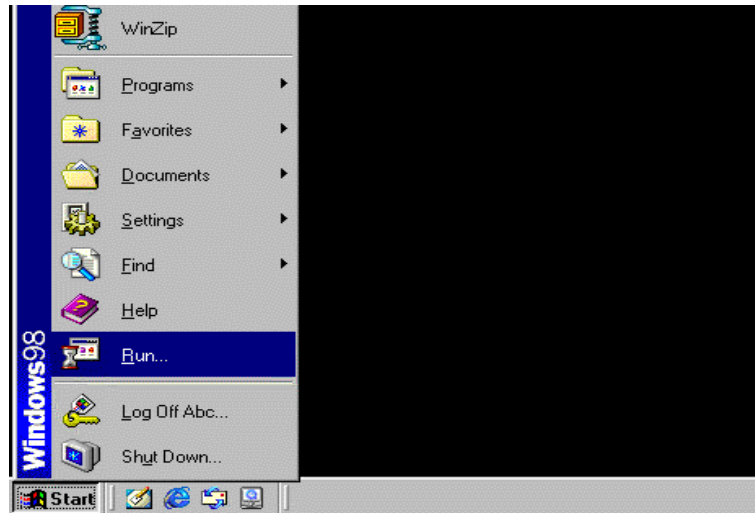


Figure 7.2.1.1

7.2.1.2 Type “fdisk”. Click “OK”.(Figure 7.2.1.2)

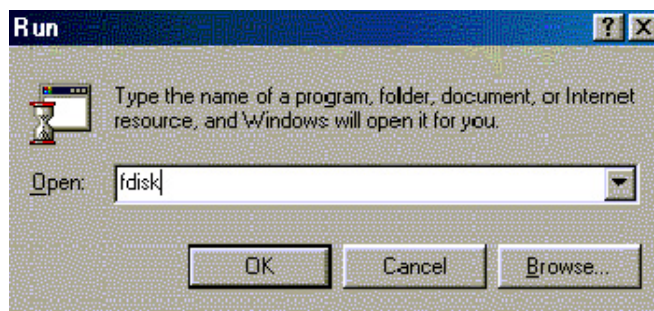


Figure 7.2.1.2

7.2.1.3 Do you wish to enable large disk support? Enter “Y” and hit <Enter> key.(Figure 7.2.1.3)

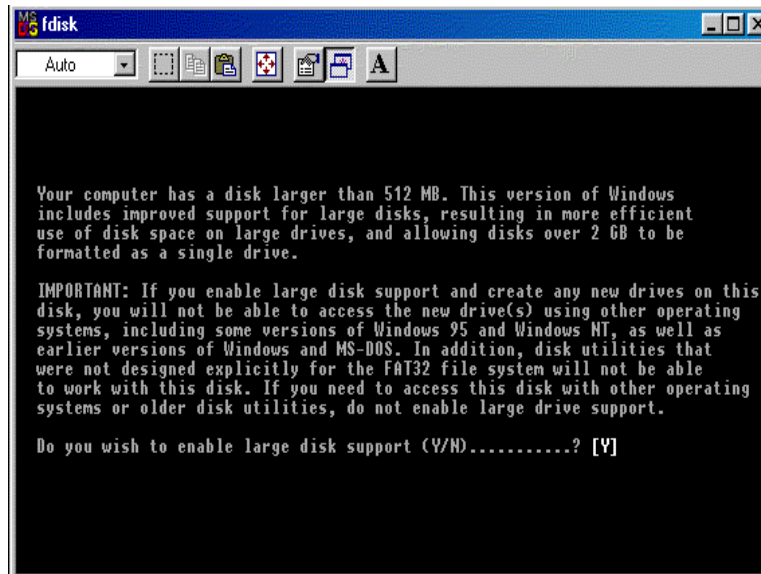


Figure 7.2.1.3

7.2.1.4 In fdisk option, select '5' to change current fixed disk drive, hit <Enter> key.(Figure 7.2.1.4)

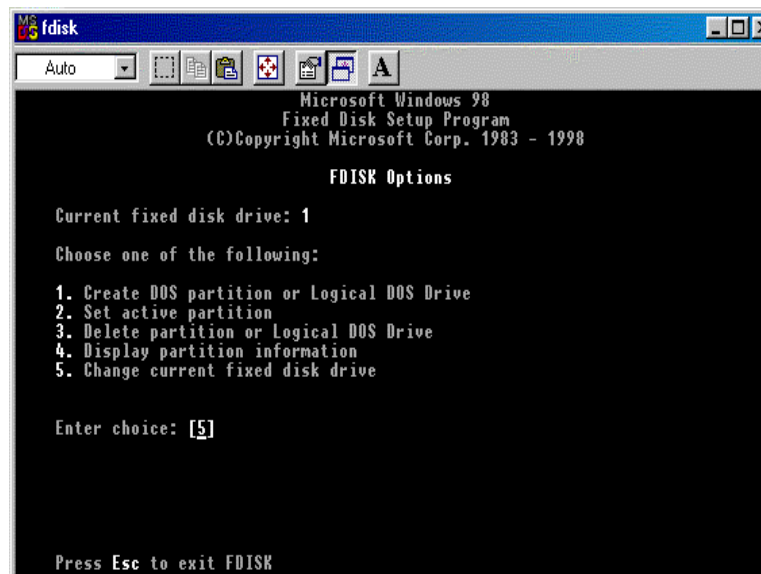


Figure 7.2.1.4

7.2.1.5 Enter '2' for fixed disk drive number, hit <Enter> key.(Figure 7.2.1.5)

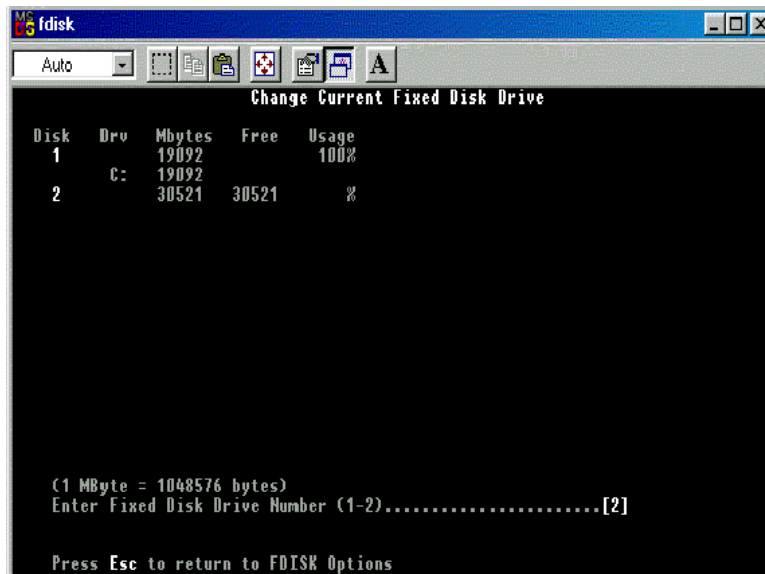


Figure 7.2.1.5

Note: If you have more than one hard disk drives installed in your computer prior to install SmartStor, you will see more than 2 fixed disk drives on the above screen. Select the last one(typically) for the SmartStor drive.

7.2.1.6 In fdisk option, select '1' to create DOS partition, hit <Enter> key.(Figure 7.2.1.6)

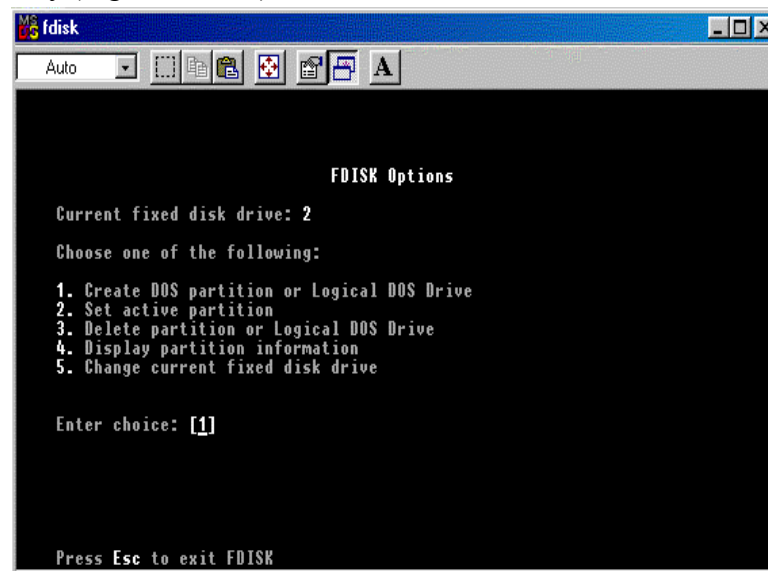


Figure 7.2.1.6

7.2.1.7 Select '1' to create Primary DOS partition, hit <Enter>key.(Figure 7.2.1.7)

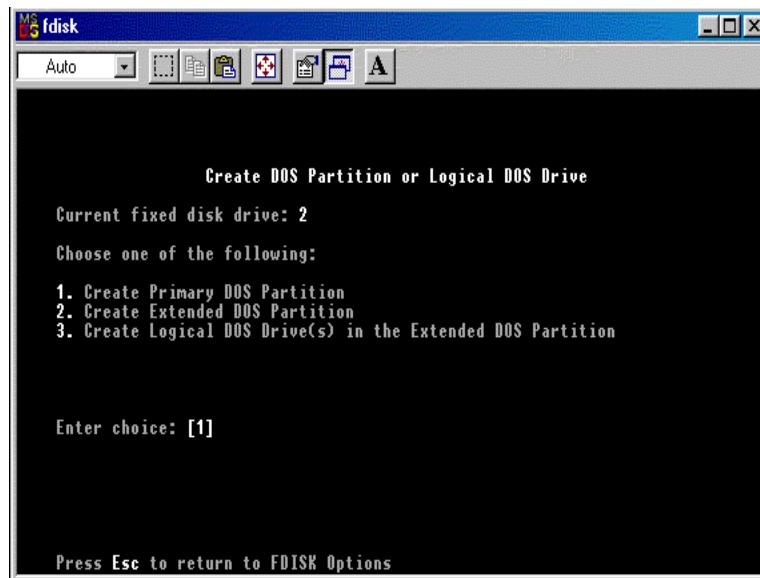


Figure 7.2.1.7

7.2.1.8 Waiting for 100% completion.(Figure 7.2.1.8)

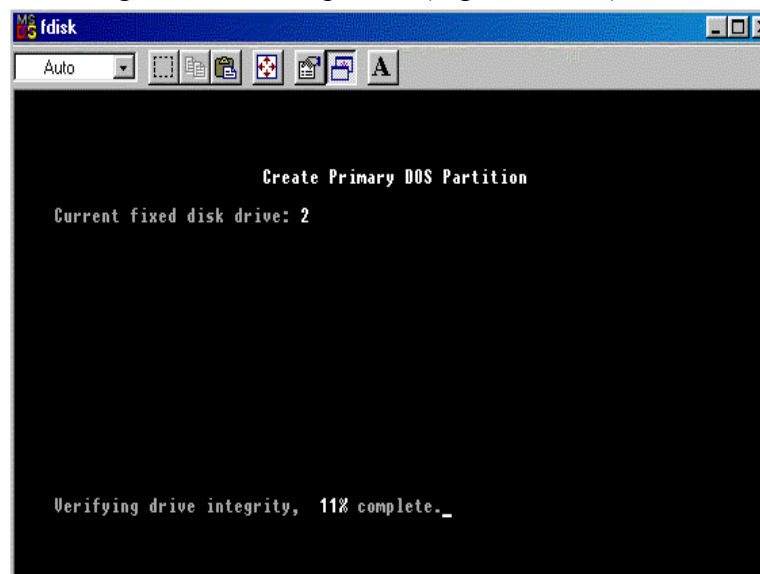


Figure 7.2.1.8

7.2.1.9 Hit <Esc> key to continue.(Figure 7.2.1.9)

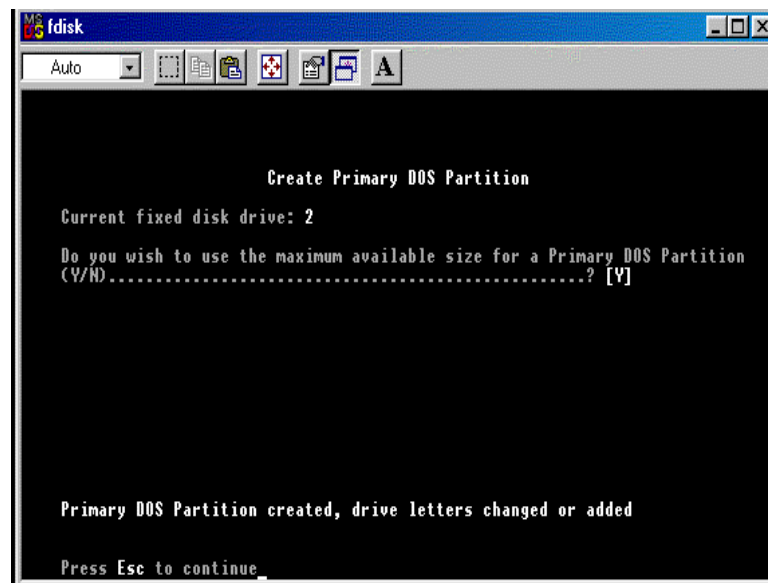


Figure 7.2.1.9

7.2.1.10 Hit <Esc> key to exit FDISK and restart your computer.(Figure 7.2.1.10)

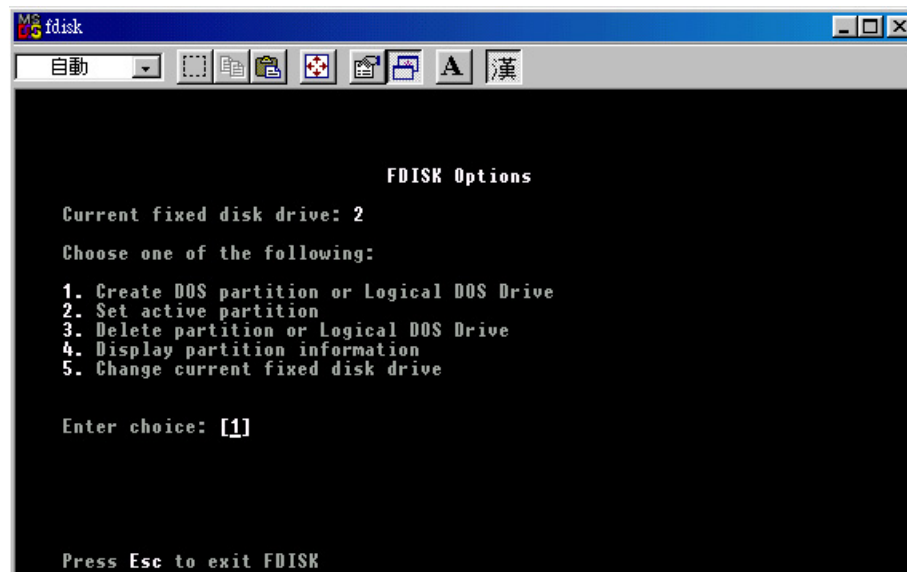


Figure 7.2.1.10

7.2.2 Format Your HDD:

- 7.2.2.1 Open “My Computer”, you should see an additional drive.(Ex:D).(Figure 7.2.2.1)



Figure 7.2.2.1

- 7.2.2.2 Select this drive and right click to select “Format”.(Figure 7.2.2.2)



Figure 7.2.2.2

- 7.2.2.3 Select “Full” under the format type frame, then click “Start” button.(Figure 7.2.2.3)

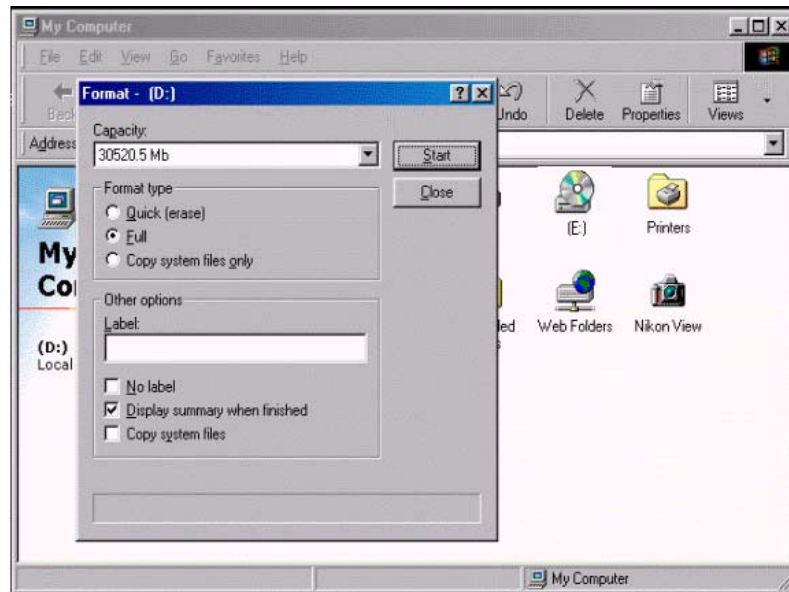


Figure 7.2.2.3

- 7.2.2.4 Select “OK” to confirm. (Figure 7.2.2.4)

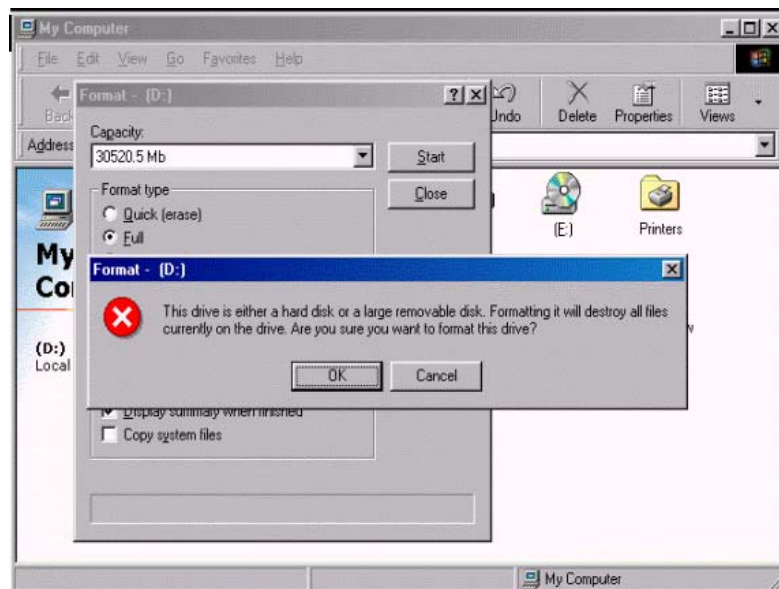


Figure 7.2.2.4

- 7.2.2.5 When format completed, click “Close” button to exit the dialog box.

7.3 For Windows 2000

7.3.1 Partition And Format Your HDD:

7.3.1.1 Select “Start” >> “Settings” >> “Control Panel” .(Figure 7.3.1.1.)

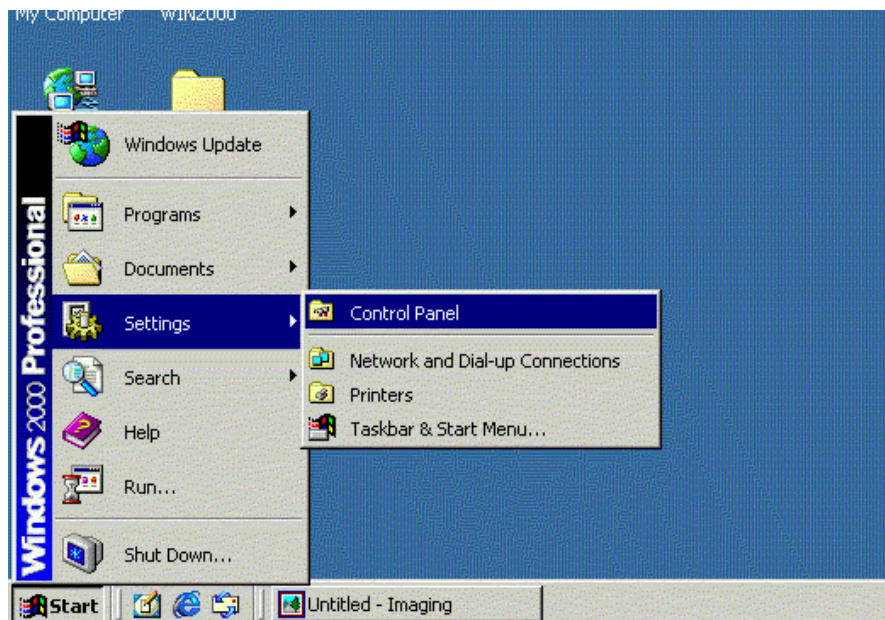


Figure 7.3.1.1

7.3.1.2 Select “Administrative Tools”.(Figure 7.3.1.2)

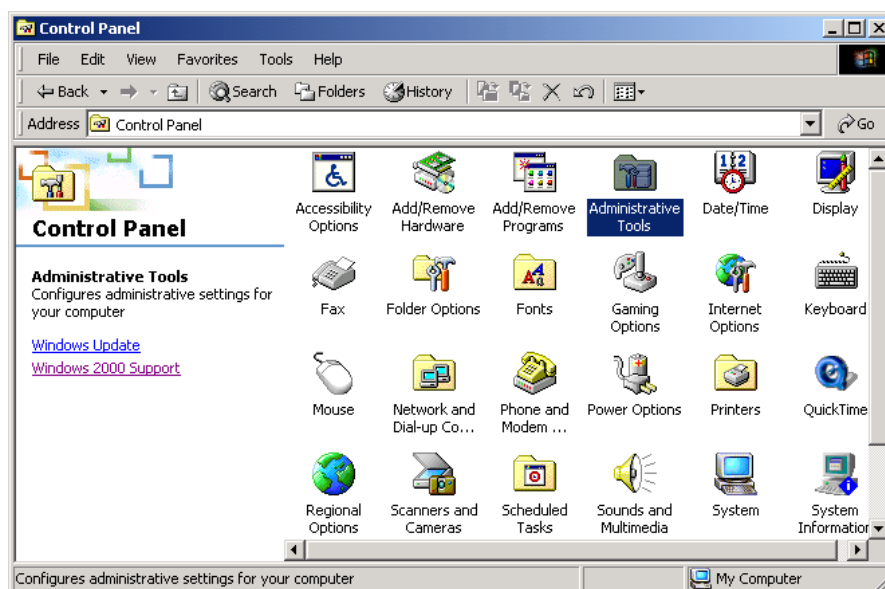


Figure 7.3.1.2

7.3.1.3 Select “Computer Management”.(Figure 7.3.1.3)

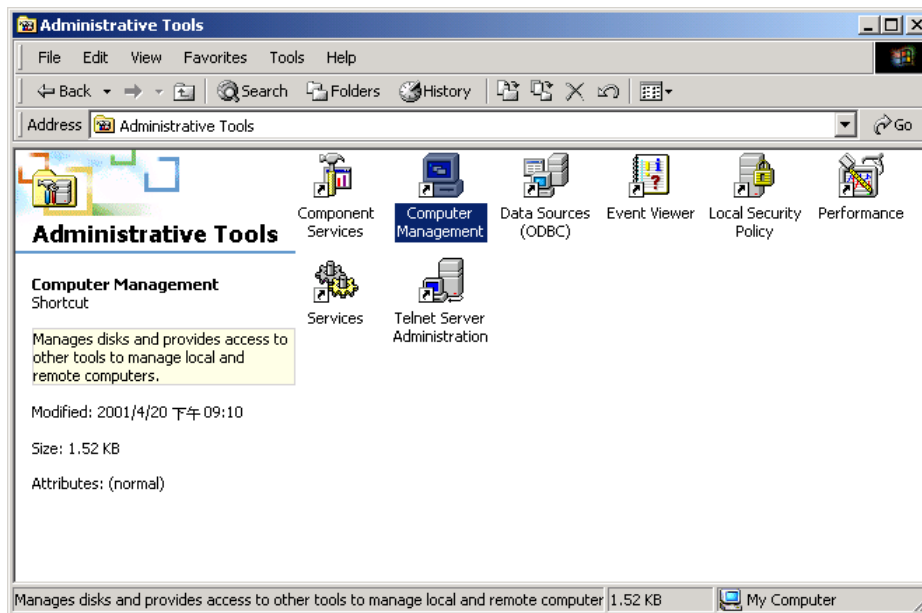


Figure 7.3.1.3

7.3.1.4 On the left panel, under “Storage”, click “ **Disk Management**”. You will see Disk 0 and Disk 1 on your bottom right panel. (Figure 7.3.1.4)

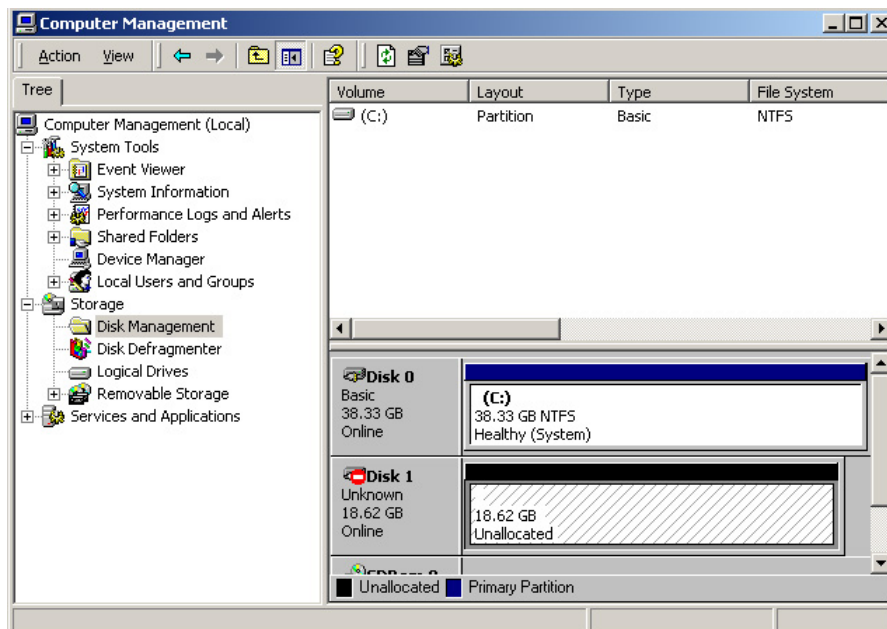


Figure 7.3.1.4

7.3.1.5 Place your cursor on Disk 1. Right click to select “Write Signature”.(Figure 7.3.1.5)

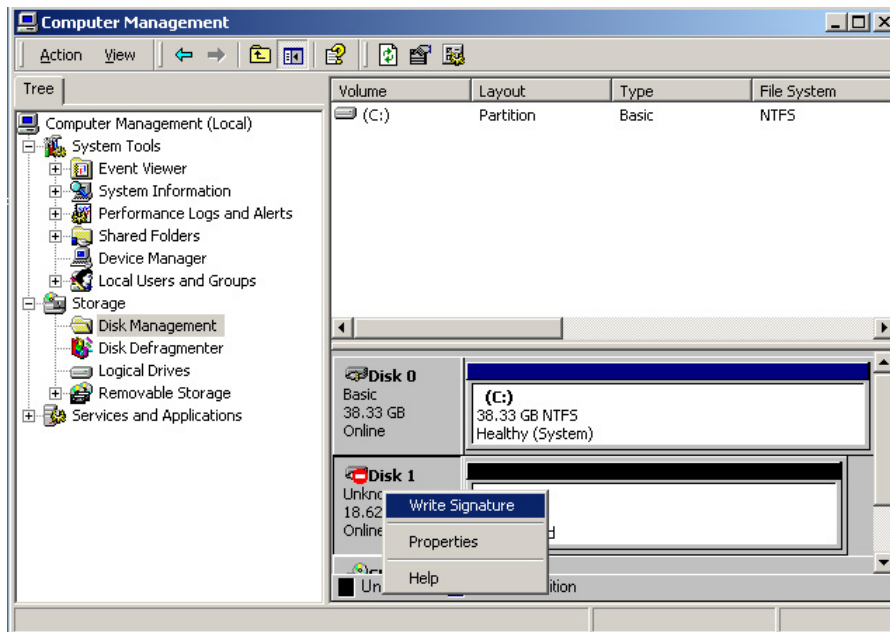


Figure 7.3.1.5

7.3.1.6 Place your cursor to the right part of Disk 1. Right click on the mouse and select “Create Partition”. (Figure 7.3.1.6)

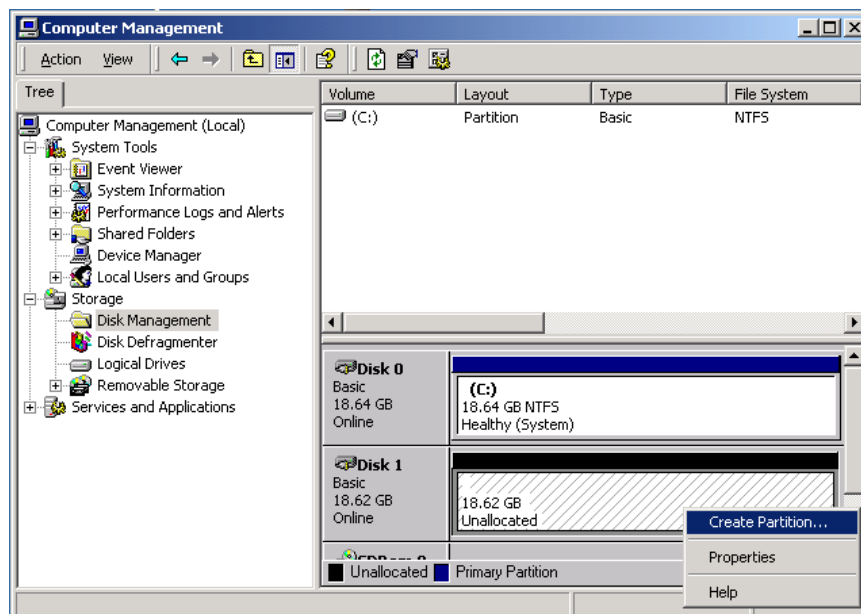


Figure 7.3.1.6

7.3.1.7 Click “Next”.(Figure 7.3.1.7)

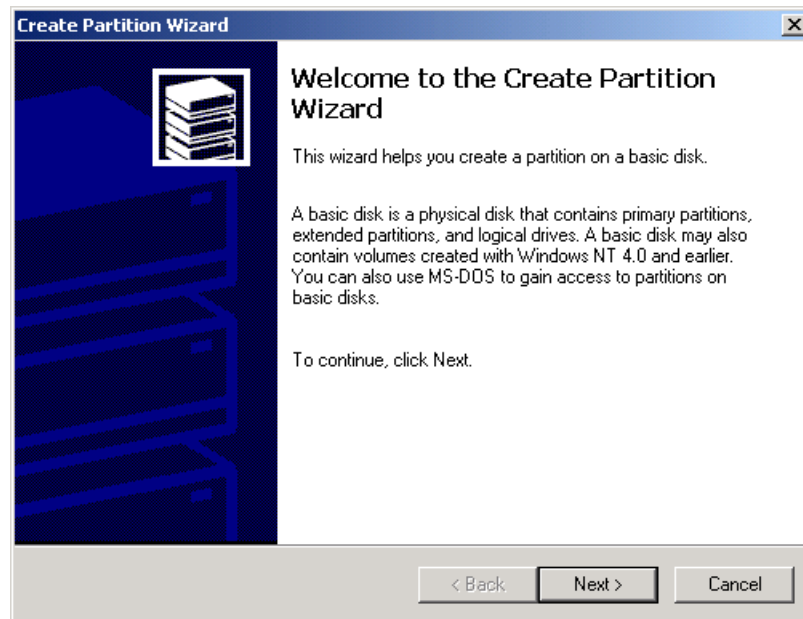


Figure 7.3.1.7

7.3.1.8 Select “Primary Partition” . Click “Next”.(Figure 7.3.1.8)

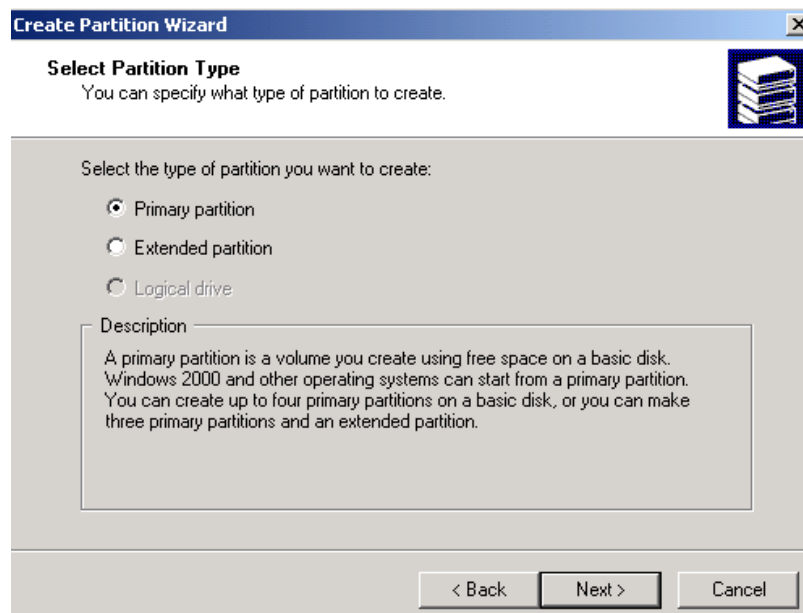
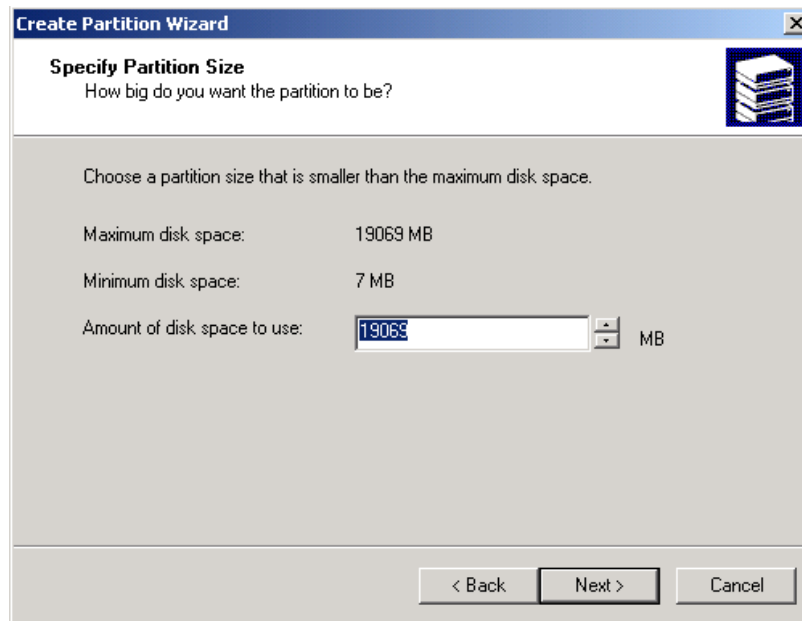


Figure 7.3.1.8

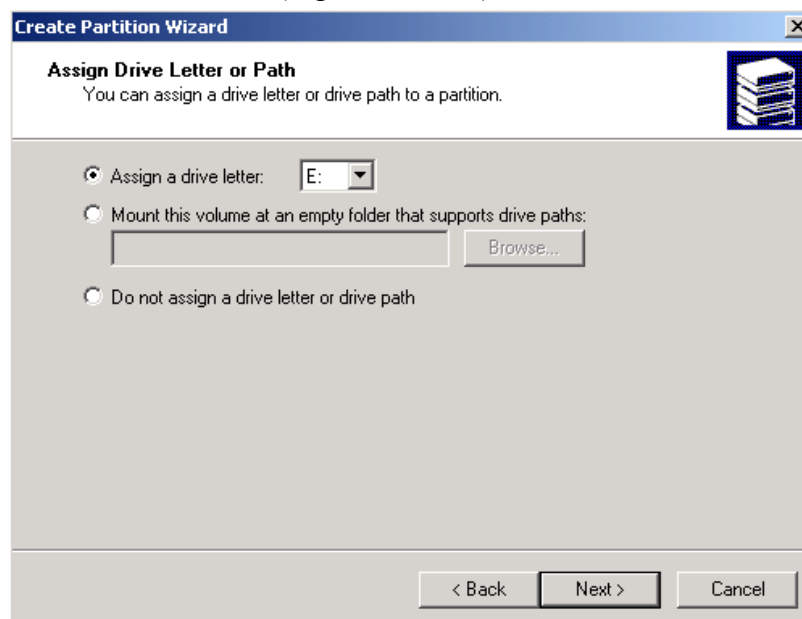
7.3.1.9 Enter the size of the partition. Click “**Next**”.(Figure 7.3.1.9)



The screenshot shows the 'Specify Partition Size' step of the 'Create Partition Wizard'. The window title is 'Create Partition Wizard'. The subtitle is 'Specify Partition Size' with the instruction 'How big do you want the partition to be?'. Below this, it says 'Choose a partition size that is smaller than the maximum disk space.' The 'Maximum disk space:' is 19069 MB and the 'Minimum disk space:' is 7 MB. The 'Amount of disk space to use:' is set to 19069 MB in a text box. At the bottom are buttons for '< Back', 'Next >', and 'Cancel'.

Figure 7.3.1.9

7.3.1.10 On “**Assign A Drive Letter** “, select a letter to label your drive. Click “**Next**”.(Figure 7.3.1.10)



The screenshot shows the 'Assign Drive Letter or Path' step of the 'Create Partition Wizard'. The window title is 'Create Partition Wizard'. The subtitle is 'Assign Drive Letter or Path' with the instruction 'You can assign a drive letter or drive path to a partition.' There are three radio button options: 'Assign a drive letter:' (selected) with a dropdown menu showing 'E:', 'Mount this volume at an empty folder that supports drive paths:' with a text box and a 'Browse...' button, and 'Do not assign a drive letter or drive path'. At the bottom are buttons for '< Back', 'Next >', and 'Cancel'.

Figure 7.3.1.10

7.3.1.11 Under Formatting, on “File System to use”: select “**FAT32**”. Click “**Next**”.(Figure 7.3.1.11)

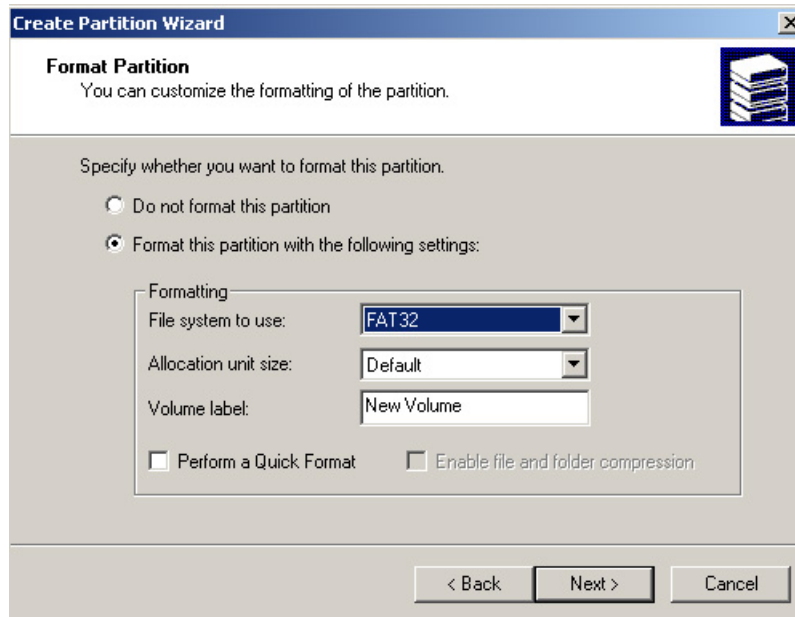


Figure 7.3.1.11

7.3.1.12 Click “**Finish**”. (Figure 7.3.1.12)

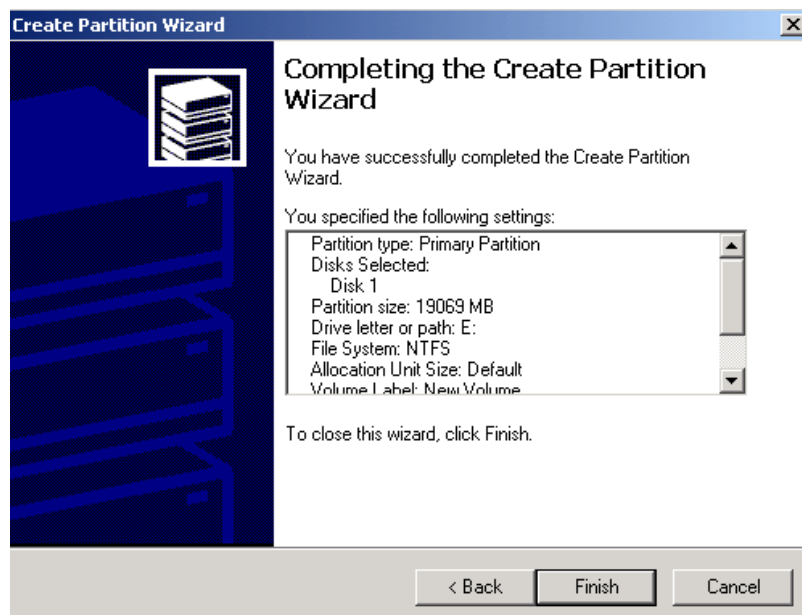


Figure 7.3.1.12

7.3.1.13 Your computer will format Disk 1.(Figure 7.3.1.13)

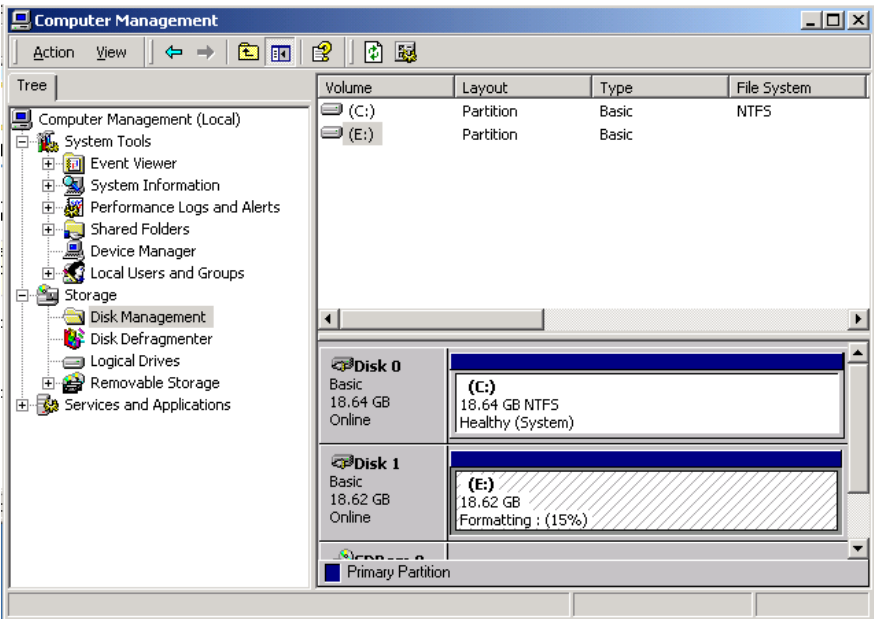


Figure 7.3.1.13

8. How To Use SmartStor SSS-125?

- 8.1 In “My Computer”, double click and open the drive of SmartStor. (Ex: D).
- 8.2 Copy any folders/files from other location(Example: C drive or Desktop) and paste to the drive of SmartStor.
- 8.3 You can copy any existing files/folders from the drive of SmartStor and paste to your local drive or desktop.

9. Unplug the SmartStor SSS-125

Note: To use SmartStor SSS-125U with Win98 O.S, please install the supplement software before using SmartStor to plug/unplug the caddy from the device.(Please refer to section 7)

9.1 For Type: USB SSS-125U

If you wish to unplug the caddy from SSS-125U under Windows 2000/ME, you will need to stop the device by following the procedures described below, otherwise your system will display a warning message that the user has removed a device in an incorrect way. This may cause system crash and data lost.(Figure 9.1).You do not need to stop the device under Windows98/98SE.



Figure 9.1

9.2 For Type: 1394a SSS-125F

If you wish to unplug the caddy from SSS-125F under Windows 98SE/ME/2000, you will need to stop the device by following the procedures described below, otherwise your system will display a warning message that the user has removed a device in an incorrect way. This may cause system crash and data lost. However, under Windows 98, you may unplug the caddy directly without stopping the device. If you are using Windows 98SE, please install the Plug and Play softwares supplement first.(Please refer to Section 7)

9.3 Steps To Stop The Device:

9.3.1 Double click the “Unplug or Eject Hardware” icon .(Figure 9.3.1)



Figure 9.3.1

9.3.2 Click “Stop” button.(Figure 9.3.2)

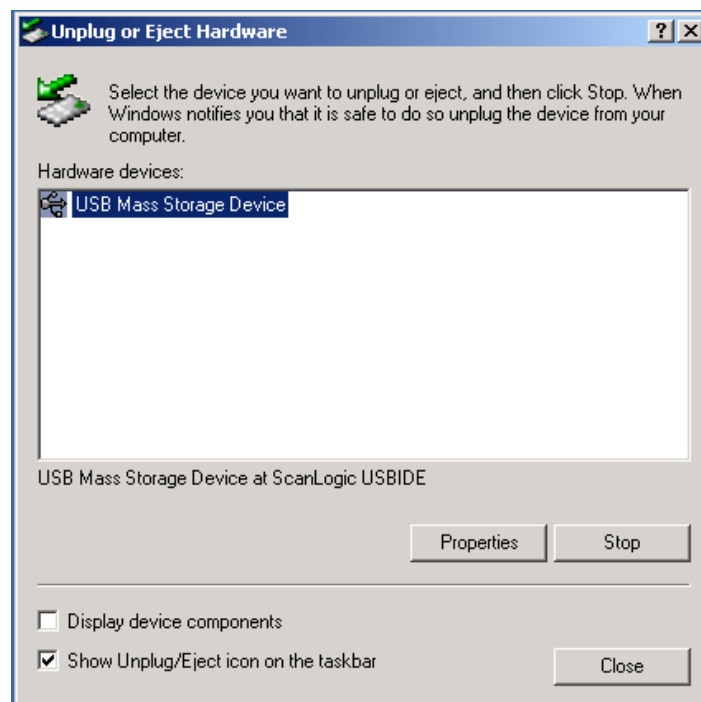


Figure 9.3.2

- 9.3.3 Select “USB Mass Storage Device” and click “OK” button to stop the SSS-125U.(Figure 9.3.3)

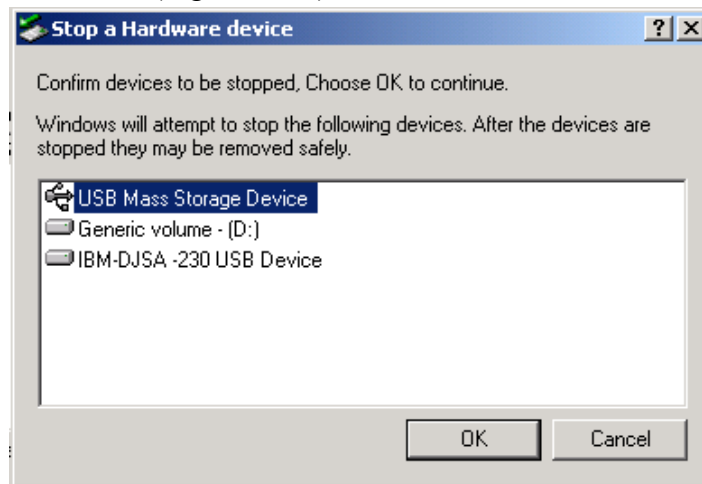


Figure 9.3.3

- 9.3.4 Click “OK” and remove the caddy. (Figure 9.3.4)

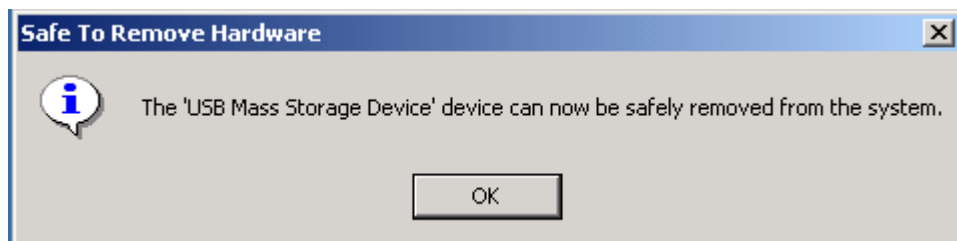


Figure 9.3.4

10. Limited Warranty

SmartStor will supply, at no cost, new or rebuilt replacement parts in exchange for defective parts for a period of one (1) year.

To make use of the warranty service, users must take the product, or deliver the product with freight prepaid, in either its original packaging or packaging affording an equal degree of protection, to any authorized SmartStor service facility.

10.1 Excluded Products And Problems

This warranty does not cover any damage due to accident, misuse, abuse or negligence, commercial use, or modification of, use of non-SmartStor supplied or approved media, or external environmental causes. In addition, this warranty does not apply to improper operation, maintenance or attempted repair by anyone other than a facility authorized by SmartStor to service the Product. This warranty does not cover such products, which, if included, are provided “AS IS” or “WITH ALL FAULTS”.

SmartStor is not able to protect, recover, or return data in the storage device during warranty service so it should be duplicated before ship back for maintenance.

This warranty does not cover normal wear and tear. Should SmartStor determine that the fault is caused by normal wear and tear, SmartStor may refuse the warrantee’s claim.

Declaration

Trademarks

Microsoft is a US registered trademark of Microsoft Corporation.

DOS and Windows 95, 98, NT, 2000 are trademarks of Microsoft Corporation.

IBM, PC, AT, XT, OS/2 are registered trademarks of International Business Machines Corp.

Linux is a registered trademark of Linus Torvald.

Other brands and product names herein are trademarks or registered trademarks of their respective holders.

Copyright

All rights reserved by Comjet Information systems Corp. No part of this publication may be reproduced, transmitted, transcribed, stored in a retrieval system, or translated into any language or computer language, in any form or by any means, electronic, mechanical, magnetic, optical, chemical, manual or otherwise, without the prior written permission of Comjet Information systems Corp.

Disclaimer

The information contained in this document is subject to change without notice.

Comjet Information systems Corp, makes no warranty of any kind regarding to this material, including, but not limited to, the implied warranties of fitness for a particular purpose.

Comjet Information systems Corp. shall not be liable for errors contained herein or for incidental or consequential damages in connection with the furnishing, performance or use of this material.

FCC Notice

This equipment has been tested and found to comply with the limits for a Class B digital device, pursuant to Part 15 of the FCC Rules. These limits are designed to provide reasonable protection against harmful interference in a commercial installation. This equipment generates, uses and can radiate radio frequency energy and if not installed and used in accordance with the instructions, may

cause harmful interference to radio communication. However, there is no guarantee that interference will not occur in a particular installation. If this equipment does cause harmful interference to radio or television reception, (which can be determined by turning the equipment off and on), the user is encouraged to try to correct the interference by one or more of the following measures:

- Reorient or relocate the receiving antenna.
- Increase the separation distance between the equipment and receiver.
- Connect the equipment into an outlet on a circuit different from that to which the receiver is connected.

Consult the dealer or an experience radio/TV technician for help.