
User's Manual

PalmRouter Elite

(MIH-108)



Table of Contents

ABOUT THIS MANUAL	1
INTRODUCTION	3
BEFORE YOU START	5
Package Overview	5
Items Required	5
System Requirements	5
EASY INSTALLATION	7
Hardware Installation	7
Software Configuration	9
Windows 95 TCP/IP Configuration	10
Mac OS TCP/IP Configuration	13
Setting Up the PalmRouter Elite through Web Browser	15
ADVANCED CONFIGURATION	19
Intranet Setting	19
Modem1 Setting	22
Modem2 Setting	27
Device Admin Setting	27
Status Monitor	28
Support	28
Firmware Upgrade	28
TROUBLESHOOTING	31

APPENDIX A SPECIFICATIONS	33
APPENDIX B HARDWARE DESCRIPTION	35
APPENDIX C GLOSSARY	37

ABOUT THIS MANUAL

The User's Manual will tell you how to connect a LAN to the Internet using the MIH-108 PalmRouter Elite Internet Sharing Hub. This manual assumes you are familiar with personal computers and network environments. It is organized as follows:

Chapter	Content
Introduction	Describes the features and main applications of the PalmRouter Elite.
Before You Start	Describes the information and environment needed to set up the PalmRouter Elite.
Easy Installation	Describes how to install the PalmRouter Elite for ordinary applications.
Advanced Configuration	Describes the detail configuration options for the PalmRouter Elite.
Troubleshooting	Lists problems and solutions one might encounter when using the PalmRouter Elite.
Appendix A	Hardware Description
Appendix B	Specifications
Appendix C	Glossary

INTRODUCTION

Thank you for purchasing the Internet Sharing Hub, MIH-108 PalmRouter Elite. The PalmRouter Elite functions as an easy-to-use communication device allowing you to connect a local area network (LAN) to the Internet. The PalmRouter Elite provides a convenient and economical solution for small office or home office (SOHO) users who want access to the Internet at a lower cost.

Sharing Internet Access

The PalmRouter Elite provides high-speed Internet access to multiple users by sharing the bandwidth of up to two dial-up accounts. It comes equipped with two serial ports that can function as dial-on-demand dial-out ports. The first serial port dials out when a request for the Internet is made. The secondary serial port dials out when the bandwidth of the first serial port has reached its limit. When users log off and the network traffic jam has been relieved, the secondary serial port disconnects automatically. If no request is made for Internet resources for a period of time, the PalmRouter Elite disconnects the first serial port automatically.

Modems Supported

The PalmRouter Elite supports 28.8/33.6/56K modems, ISDN TAs and leased-line connections. Up to two modems can be connected simultaneously to increase total bandwidth.

Authentication Protocol Supported

The PalmRouter Elite supports PAP/CHAP authentication protocols and login scripts for PPP dial-up connections.

Built-in DHCP Server

The PalmRouter Elite allows for automatic TCP/IP configuration on computers over the LAN. The built-in DHCP server dramatically reduces the configuration and maintenance effort.

8-Port Ethernet Hub Inside

In addition to Internet sharing capability, the PalmRouter Elite also functions as an Ethernet hub. It has eight 10BASE-T RJ-45 ports, allowing users to connect with a small LAN.

Easy Configuration

The PalmRouter Elite can be configured through a Web browser, and features Web-based management for a simple, intuitive set up.

Virtual Server

Internet users can set up and access servers (such as WWW, and FTP) through the Virtual Server mapping function of the PalmRouter Elite.

Security

The PalmRouter Elite provides firewall-like security to prevent unauthorized Internet users from accessing internal files. It can also filter out Internet requests from certain nodes on a local network - a feature that is ideal for administrative purposes.

BEFORE YOU START

This chapter provides information about package contents and requirements for installing the PalmRouter Elite.

Package Overview

Please check to make sure you have received the items listed below before setting up your PalmRouter Elite.

• PalmRouter Elite	1
• Power Adapter	1
• Mini Din-8 to DB-9 Adapter	1
• User's Manual	1

Items Required:

- At least one Internet-access account from an ISP
- An analog telephone line or ISDN line
- A modem or ISDN terminal adapter
- UTP cable with RJ-45 connector

System Requirements

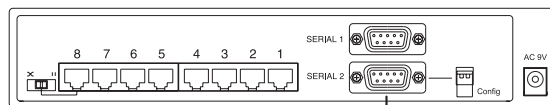
- Any personal computer equipped with a 10BASE-T Ethernet connection interface that can support TCP/IP protocol on Ethernet.
- Windows 95/98, Windows NT 4.0 or later versions-Optional for using PC version of firmware upgrade program only.
- Mac OS 7.5 or later versions-Optional for using Mac version of firmware upgrade program only.
- Netscape Communicator 4.0 or above, Microsoft Internet Explorer 4.0 or later versions are necessary for Web configuration.

EASY INSTALLATION

Hardware Installation

Modem Connection

Connect one end of an RS-232 serial cable to the modem/ISDN TA. Connect the other end to either of the two DB-9 serial ports found on the back of the PalmRouter Elite.



Connect to modem with the DB-9 pin female end of RS-232 serial cable

If you are connecting a modem designed for Macintosh use to the PalmRouter Elite's serial ports, the Mini-Din 8 to RS-232 DB-9 adapter (contained in the package with the PalmRouter Elite) should be used.



Mini Din-8 to RS-232 DB-9 adapter

Note: If you want to reset the modem and you are using the Mini Din-8 to RS-232 Adapter (to connect a modem designed for Macs), please wait for 10 seconds after turning the power off in order to let the PalmRouter Elite detect the disconnection.

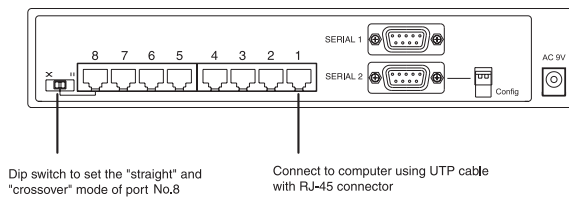
The PalmRouter Elite can support up to two modem connections simultaneously. The two serial ports labeled "SERIAL 1" and "SERIAL 2" can function as dial-out connections. To do so:

- 1) Connect the phone line to the modem/ISDN TA.
- 2) Connect the power adapter to the modem/ISDN TA and keep the power off until all hardware installation procedures are complete.

Connecting the PalmRouter Elite to Your Network Environment

Use standard twisted-pair Ethernet cables with RJ-45 connectors to connect computers or other Ethernet devices to the RJ-45 ports of the PalmRouter Elite.

You can connect computers to any one of eight RJ-45 ports on the rear panel of the PalmRouter Elite. But if you intend to connect the PalmRouter Elite to another hub, we advise that you keep port No.8 free because this is the only port that can be used to uplink the PalmRouter Elite to another hub. Uplinking can be done by setting the DIP Switch beside the port from "straight" to "crossover" mode.



Dip switch to set the "straight" and "crossover" mode of port No.8

Connect to computer using UTP cable with RJ-45 connector

Plug the power adapter of the PalmRouter Elite into an AC power outlet, then plug the power adapter output cable into the power connector on the rear panel of the unit. The Power LED on the front panel should be lit immediately.

Software Configuration

TCP/IP Network Configuration of Clients

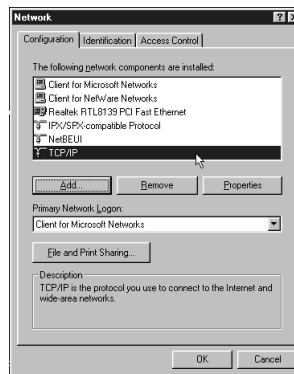
After installing the PalmRouter Elite hardware, the PalmRouter Elite needs to be configured through a Web browser (such as Netscape Navigator, Netscape Communicator, or Microsoft Internet Explorer). The computer that will manage the PalmRouter Elite must have its TCP/IP settings configured correctly. All other computers receiving Internet access through the PalmRouter Elite must also have their TCP/IP settings configured correctly.

The PalmRouter Elite's default IP address is "**192.168.1.1**". In order to connect the PalmRouter Elite, the computer designated for managing clients must be on the same subnet as the PalmRouter Elite. Consequently, IP addresses ranging from "192.168.1.2" to "192.168.1.252" are legal for clients to use. IP addresses from "192.168.1.253" to "192.168.1.255" are reserved for system use and network broadcasts.

The PalmRouter Elite can support both Windows and Macintosh platforms. Please follow the proceeding steps to configure the Windows and Macintosh TCP/IP settings.

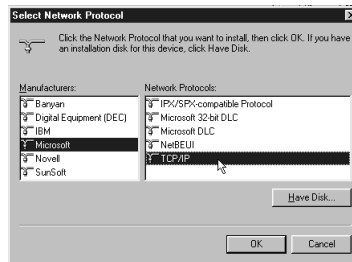
Windows 95 TCP/IP Configuration

1. Double click the **Control Panel** icon in **My Computer** folder.
2. From the Control Panel, double click on the **Network** icon to show the installed network interface card and network protocol on the Configuration list. Double click the **TCP/IP** protocol on the list. If TCP/IP does not appear on the list, you must install the TCP/IP protocol first. For the clients with TCP/IP already installed skip to step 4.

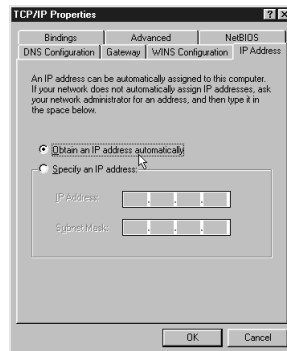


3. Keep your copy of Windows 95/98 CD-ROM on hand and on the Configuration list of the Network window click the **Add...** button. In the window that appears, double click **Protocol**, then on the Select Network Protocol window choose **Microsoft** on the Manufacturers list and select **TCP/IP** on the right side of the list. Follow the instructions that appear on the monitor to complete the installation.

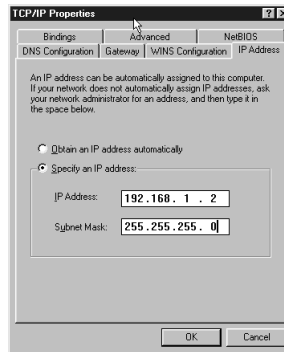
Easy Installation



4. After double clicking the installed TCP/IP protocol, the TCP/IP properties window appears. Click **IP Address** and select the **Obtain IP address automatically** item. (This is a more convenient way to set up the TCP/IP configuration of clients that relies on the built-in DHCP server of the PalmRouter Elite). The Gateway and DNS Configuration settings can also be ignored because the PalmRouter Elite will configure them automatically.



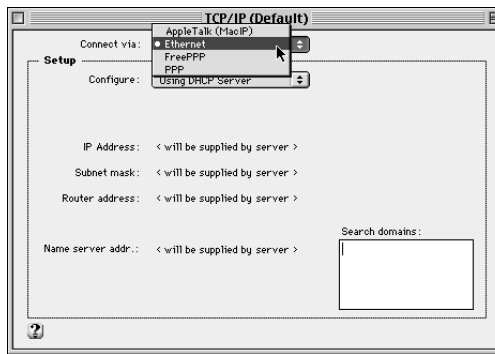
-
5. If there is already a DHCP server on the network, or if you prefer not to use the PalmRouter Elite's DHCP function, you can still set up the TCP/IP configuration manually. Remember, the IP address you specify must be on the same subnet as the PalmRouter Elite's IP address to avoid IP address conflicts. Set up the Subnet Mask as "255.255.255.0" and specify the DNS address with the value that your ISP provides. The **Gateway IP address** must be the same as the PalmRouter Elite's IP address (the default IP address is "192.168.1.1").



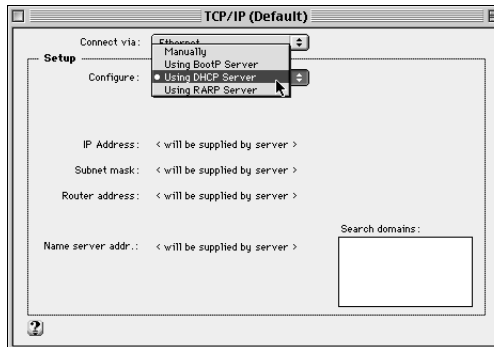
6. After specifying the settings of TCP/IP click "OK" and restart Windows to let the settings take effect.

Mac OS TCP/IP Configuration

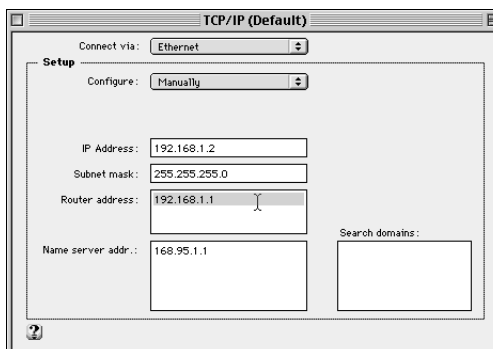
1. Open the TCP/IP control panel.
2. In Connect via field, select **Ethernet** if you intend to use the built-in Ethernet interface on mainboard, or select an alternate network driver if you have a third party Ethernet adapter installed in your computer.



3. In the Configure pull-down menu that appears, select **Using DHCP Server** to allow the built-in DHCP server of the PalmRouter Elite to assign an IP address and other TCP/IP configuration information to the client automatically. Do this for each client that needs Internet access through the PalmRouter Elite



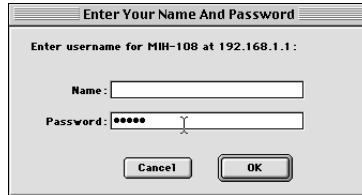
4. If there is already a DHCP server on the network, or if you prefer not to use the PalmRouter Elite's DHCP function, you can select **Manually** to specify an IP address and other TCP/IP configuration information yourself. Remember the IP address you specify must be on the same subnet as the PalmRouter Elite's IP address to avoid IP address conflicts on your network. Set up the Subnet Mask as "255.255.255.0" and the Router address the same as PalmRouter Elite's IP address. Set up the DNS address with the value that your ISP provides.



5. Close the TCP/IP window and save the changes.

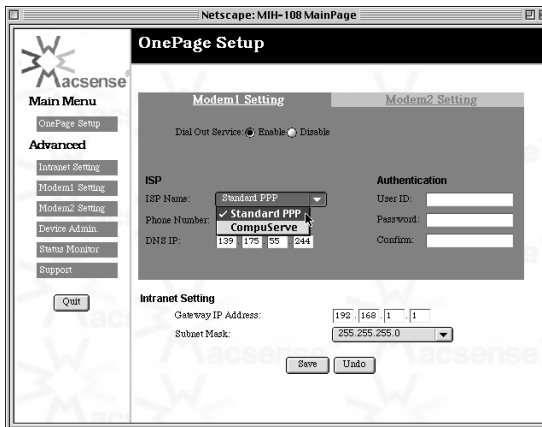
Setting Up the PalmRouter Elite through a Web Browser

1. After performing the TCP/IP configuration of the computer that will manage the PalmRouter Elite, start the Web browser to connect the PalmRouter Elite. (Netscape Communicator 4.0, Internet Explorer 4.0 or above are necessary for configuring the PalmRouter Elite. Other clients are not subject to this restriction).
2. Type the PalmRouter Elite's IP address in the Web site address area ("192.168.1.1" as the default setting) and press **ENTER**. The Username and Password Required window will pop up. Leave the User Name blank and enter the Password "**admin**", which is the default password of the PalmRouter Elite. You can change the password through a Web management page later. Click "**OK**" to enter the Web management page.



3. The OnePage Setup window will pop up. Select the applicable ISP name from the pull-down list. The default setting is **Standard PPP**. For example, if you use CompuServe on-line service to access the Internet, then select **CompuServe**.

Note: America Online (AOL) doesn't support PPP dial-up connections. However, clients may use AOL through TCP/IP after an initial connection has been made through a PPP dial up account.



4. Fill in the **ISP's phone number, DNS IP address, User ID and Password** respectively. You can obtain this information from your ISP.

Example:

ISP's phone number: 444-555-6666

DNS IP address: 222.162.134.232

User ID: Macsense

Password: xxxxxxx

5. Leave the Intranet Settings as default, Gateway IP address "192.168.1.1" and Subnet Mask "255.255.255.0", unless you need to make modifications to fit your network environment.
6. Examine all values before clicking **Save** and leaving the Web management page. In most cases you can connect to the Internet with these settings completed. By launching a Web browser, e-mail application or other program, the PalmRouter Elite will proceed to dial-up.
7. If an error occurs during the dial-up process, or if ISDN TAs will be used for dialing up to an ISP, you should specify the modem settings manually of the Modem Setting page. Please refer to the Modem Setting section in the "Advanced Configuration" chapter.

ADVANCED CONFIGURATION

Please refer to the previous chapter on how to enter the Web Management page of the PalmRouter Elite. The [Advanced Menu](#) contains six submenus including [Intranet Setting](#), [Modem1 Setting](#), [Modem2 Setting](#), [Device Admin](#), [Status Monitor](#), and [Support](#).

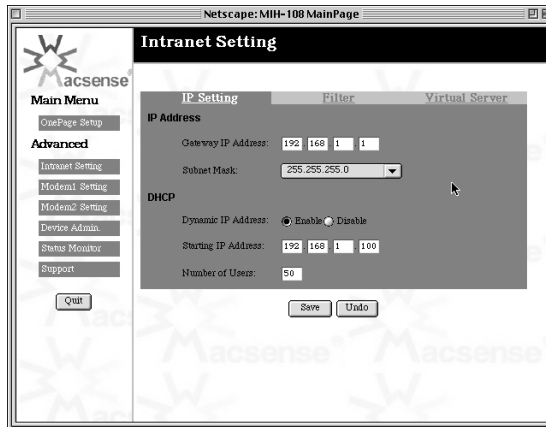
Intranet Setting

Click **Intranet Setting** in the [Advanced menu](#). There are three parts you will need to set under this page: [IP Setting](#), [Filter](#), and [Virtual Server](#).

IP Setting

The [Gateway IP Address](#) and [Subnet Mask](#) of the PalmRouter Elite can be specified in this part. You can also choose if you would like to use the built-in DHCP server on the [Dynamic IP Address](#) setting. Set the [Starting IP Address](#) and [Number of Users](#) that the built-in DHCP server will assign when the DHCP function is enabled. The default setting for [Starting IP Address](#) is "192.168.1.100". You can specify your own [Starting IP Address](#), but remember to make sure the IP address you specify is on the same subnet as the PalmRouter Elite.

Advanced configuration



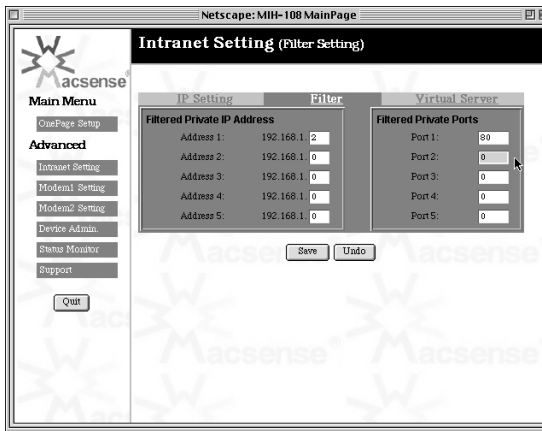
Filter

In this part of the Intranet Setting menu, the IP Address Filter prevents up to 5 local network clients from accessing certain services on the Internet via the PalmRouter Elite. The specific types of Internet services to be filtered are based on the TCP port numbers which these services use for communication.

Some well-known TCP port numbers are listed below:

Port number	Service name
21	FTP
23	Telnet
25	SMTP
53	DNS
70	Gopher
80	HTTP
110	POP3
161	SNMP

Up to 5 TCP ports can be specified on the Filtered Private Ports setting.



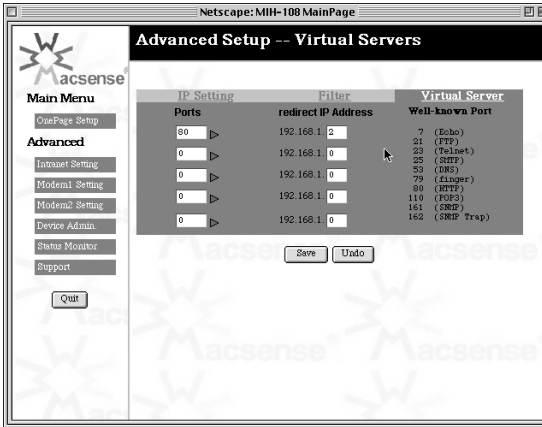
Virtual Server

It is possible to set up a server such as a Web or FTP server on your network for Internet users to access. Internet users simply need to enter the IP address that has been assigned to your dial-up connection to get access to LAN servers. The PalmRouter Elite will redirect the request of the Internet user to the specified IP address of the TCP port request.

Note: It will be much more convenient to have a fixed address from your ISP. Failure to do so will result in being assigned a different IP address every time a dial-up connection is made to the ISP.

For example, if you set up the TCP port 80 (HTTP: Hypertext Transfer Protocol) to be redirected to IP address "192.168.1.2" on the Virtual Server setting, the request from the Internet user via HTTP protocol (i.e. acquire Web page from browser) will be transferred through the PalmRouter Elite to the computer with IP address "192.168.1.2" on your local network.

Advanced configuration



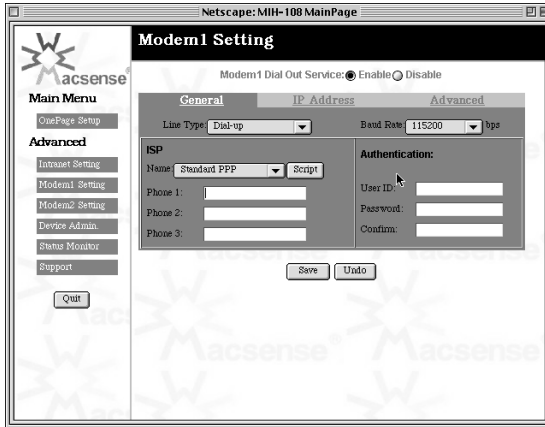
Modem1 Setting

Modem1 is the modem connected to the Serial1 port of the PalmRouter Elite. There are three parts to set up in this page.

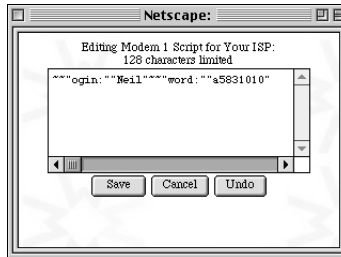
General

Select the Line Type and the Baud Rate from the pull-down menu. The selection in the Line Type field includes **Dial-up**, **Leased Line** and **ISDN**. It is suggested that the Baud Rate should be about four times the maximum speed of your modem. In the ISP Name pull-down menu, select **Standard PPP** for common ISPs or select **CompuServe** for CompuServe online service. Enter the necessary ISP and **Authentication** information.

Advanced Configuration



If your ISP account needs a [Login Script](#) for authentication, click the **Script** button and a window below will pop up. Enter the necessary script file to connect to the ISP. The following is a sample script file with the proper syntax and the meaning of the command.



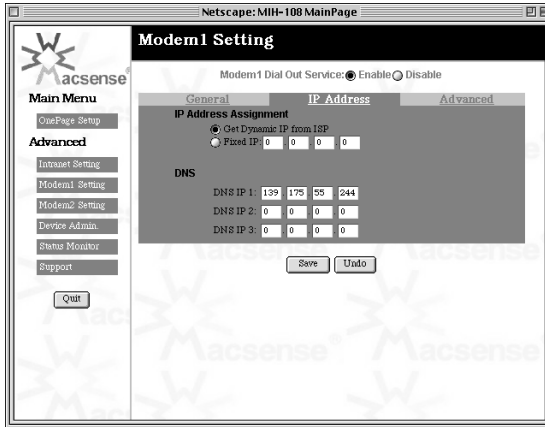
Advanced configuration

Command	Description
~~	Wait for two seconds before executing the next script line. The number of "~" stands for the time of seconds.
"ogin:"	The double quotes stands for sending/receiving the message. The 'ogin:' is part of 'login.'. To avoid mistakes such as lowercase/uppercase error on the beginning letter "L". Use "ogin:" as criteria to verify that the ISP is sending login message.
"Neil"	After receiving the login requirement from the ISP, you can enter your login name 'Neil' within double quotes to send the message. Please note that the login name is provided by ISP.
~"word"	'word' is part of 'password'. After sending out the login user name, you may wait two seconds for the ISP to ask for your password.
"a5831010"	After receiving the inquiry from your ISP, please enter your password within double quotes to send the message.

IP Address

If you can get a fixed IP address from your ISP, you can enter the fixed IP address here. The fixed IP address would be very useful for an Internet user to get access to the resources on your local network.

Enter the DNS (Domain Name Server) IP address obtained from your ISP on the DNS setting. Up to three DNS IP addresses can be set.



Advanced

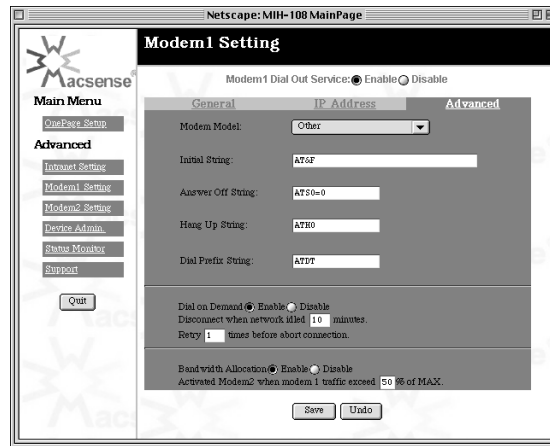
This page describes how to set up the initial string for the modem connected to the SERIAL 1 port of the PalmRouter Elite. You can use the pre-defined setting on the pull-down list if your modem appears on the list, or set up the modem initial string manually. Please refer to the user's manual of your modem for the initial string configuration.

Note: Unlike most modems, ISDN initial strings vary between different ISDN TAs and there is no "Standard ISDN TA" initial string. If your ISDN TA is not listed in the modem selection list, you must set up the ISDN TA initial string by yourself. The initial string should be listed in your ISDN TA user's manual. There are probably many initial strings listed for your ISDN TA. The one you are looking for is Asyn-to-Sync PPP (Asynchronous to Synchronous PPP). You can enter this initial string if only one channel of you ISDN TA will be used. If you would like to bundle both channels of your ISDN TA together, you should use the initial string for Multilink-PPP instead.

Advanced configuration

You should also verify whether your ISDN TA supports the Dial-up string ATDT. Most ISDN TAs support ATDT but a small portion of ISDN TAs support ATD or ATDI.

Please also note that to bundle the two channels of ISDN TA together, you must enter the two phone numbers in the Telephone Number field of the Modem Setting menu.



You can disable the **Dial on Demand** function on this page. The default setting is “enable” and it is recommended. On this page, you can specify the amount of idle time that passes in network activity before the PalmRouter Elite disconnects.

Dynamic Bandwidth Allocation can be selected to be on or off. If **Bandwidth Allocation** is enabled, the threshold to activate modem 2 should be specified in the percentage of maximum traffic through modem 1.

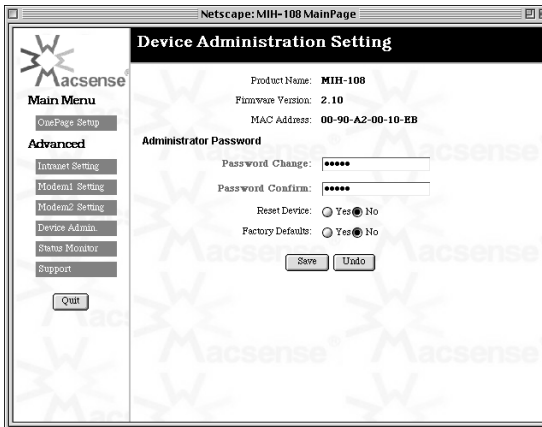
Modem2 Setting

The Modem2 Setting page contains the functions needed to set up the modem connected to Serial2 port of the PalmRouter Elite.

Settings of Modem2 are identical to Modem1. Please refer to Modem1 Settings for details.

Device Admin

This page is designed to show the firmware version and MAC address of this PalmRouter Elite. You may change the password or reset the device here. Selecting "Yes" to the Factory defaults will clear all the settings previously configured and return to the default configurations.



Status Monitor

This page provides information on the working status of the PalmRouter Elite.

Support

This page will link to the Web site of Macsense Connectivity, Inc. for the further firmware upgrade files and technical support.

Firmware Upgrade

Macsense is continually improving the firmware (software programmed on a PROM) in each of its products. The PalmRouter Elite is shipped with the most up-to-date software available at production time. If a firmware upgrade becomes available, it will be posted in the service and support section of our Web site. To upgrade the PalmRouter Elite, you will need the TFTP client and the firmware file named "**Code.bin**." These two files can be found on our Web site at www.macsensetech.com. Follow the upgrade procedure listed below.

1. Download the firmware updater from our Web site. The firmware updater should have these two files:
 - 1) TFTP client
 - 2) "**Code.bin**"
2. Double click the TFTP client icon to run the program. Enter both the IP address of the PalmRouter Elite and your password.



3. Click the button beside the **File Name** field. This will bring up a window allowing you to specify the location of the firmware file "**Code.bin**".
4. Click the **Upgrade** button and the upgrade process will begin. After the upgrade is complete remember to reset the PalmRouter Elite. This can be done by unplugging the device and then plugging it back in.

Note: Keep the firmware file name "**Code.bin**" unchanged or the TFTP client software won't recognize it.

5. If the upgrade has failed, the lights of Modem1 and Modem2 in the PalmRouter Elite will flash back and forth. If this happens, try repeating steps 2 - 4 of this procedure.

TROUBLESHOOTING

This chapter provides solutions to problems that may occur during installation and operation of the MIH-108 PalmRouter Elite.

1. The Link LED is off.

- Check all connectors to make sure they are well connected.

2. The collision LED is always lit.

- Make sure that the 10BASE-T cable does not exceed its specified maximum length (100-meters).
- Check all connectors to make sure that they are secure.
- Use Category 5 cables. Each wire should have a solid connector.

3. Modem is not able to dial out.

- Make sure all of the physical connections are secure and the modem is powered on.
- Make sure a working phone line is connected to the modem.
- The ISP's phone number was incorrectly entered.
- The phone number may need a prefix digit such as "0," to get an outside line. The comma stands for the connection waiting time.
- Try adjusting the Baud Rate. (Instructions are on the **General** page of the [Modem 1 Setting](#) section).

4. Modem can dial out, but won't connect to the ISP.

- Check the initial string set up. Be sure to power off and power on the modem after changing the initial string.

5. Can't connect to MIH-108 PalmRouter Elite via Web browser.

- Check out whether the IP address 192.168.1.1 is correct or not.
- Check the network cable connection and LAN LED indicator on the PalmRouter Elite.
- Check out the TCP/IP setup on your client. Type "winipcfg" on DOS prompt under Windows 95 or open the TCP/IP control panel on the Mac OS platform. The client should get an IP address of 192.168.1.x (where "x" is from 1 to 254.)

6. Firmware upgrade failed

- Escape from the upgrade window.
- Enter TFTP client again and you will be asked to execute the upgrade program again. Repeat the upgrade procedure.
- After completing the upgrade procedure, unplug the power cable of the PalmRouter Elite to reboot the system.

APPENDIX A SPECIFICATIONS**Standards Compliance**

IEEE 802.3 10BASE-T, PPP, TCP/IP, DHCP, CHAP/PAP

WAN Interface

Two RS-232 9-pin connectors

LAN Interface

Eight 10BASE-T RJ-45 ports

Web-based Management

Yes

LED Display

Power, Link/Activity for WAN/LAN ports, Collision/Partition for LAN ports

Environment

Operation Temperature	0~45°C (32~113°F)
Storage Temperature	-20~70°C (-4~158°F)
Humidity	0~90%

Dimensions

LxWxH (mm)	142x236x46
LxWxH (in.)	5.59x9.29x1.81

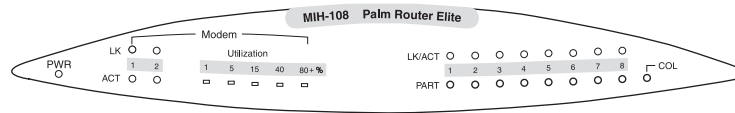
Power

AC9V, 1A

Certifications

EMI/EMC	FCC Class B / CE Mark Class B / VCCI Class 1
Safety	CUL(UL&CSA)/LVD/TÜV

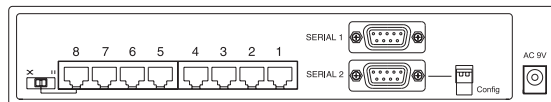
APPENDIX B Hardware Description



Front Panel Description

Label	LED	Description
PWR	green	Indicates that there is power to the unit.
Modem 1 /Modem 2		
LK	green	Indicates the Modem has a live connection and the PPP connection is established.
ACT	yellow	Flashing yellow LED indicates that data packets are flowing through the modem ports.
Utilization	green	Indicates the total traffic utilization of Internet connection.
Ethernet		
LK	green	Indicates proper connection to a computer or hub.
ACT	yellow	Flashing yellow LED indicates that there are packets flowing through this Ethernet port
PART	red	Indicates that there is severe collision at this port and that this port is being isolated from the other ports temporarily.
COL	yellow	Indicates that a collision is happening

Appendix B



Rear Panel Description

Ethernet Ports

Eight 10BASE-T Ethernet network (RJ-45) ports used for linking hub/computer.

SERIAL 1 /SERIAL 2 ports

Used to connect modems, Two DB-9 pin male connectors

Configuration Switch

For future use.

Power AC 9V

Uses the power adapter in the package to connect this port.

Uplink switch

Used for setting uplink/normal mode of port No.8.

APPENDIX C GLOSSARY

DHCP

DHCP is a protocol for automatic IP configuration. Client side computer can get one IP from DHCP server automatically. Using DHCP can save the effort of setting IP for every LAN computers.

Dial-up Access

Refers to connecting a device to a network via a modem and a public telephone network. Dial-up access is really just like a phone connection, except that the parties at the two ends are computer devices rather than people. Because dial-up access uses normal telephone lines, the quality of the connection is not always good and data transfer rates are limited, but new technologies such as ISDN provide faster speed.

An alternative way to connect two computers is through a leased line, which is a permanent connection between two devices. Leased lines provide faster throughput and better quality connections, but also more expensive.

Domain Name

A name that identifies one or more IP addresses. For example, the domain name "microsoft.com" represents many IP addresses. Domain names are used in URLs to identify particular Web pages. For example, in the URL <http://www.pcwebopedia.com/index.html>, the domain name is pcwebopedia.com.

IEEE

Abbreviation of Institute of Electrical and Electronics Engineers, pronounced "I-triple-E". Founded in 1884, the IEEE is an organization composed of engineers, scientists, and students. The IEEE is best known for developing standards for the computer and electronics industry. In particular, the IEEE 802 standards for local-area networks are widely adopted.

Appendix C

Internet

A global network connecting millions computers. As of 1998, the Internet has more than 100 million users worldwide, and that number is growing rapidly. More than 100 countries are linked into exchanges of data, news and opinions.

IP Address

An identifier for a computer or device on a TCP/IP network. Networks using the TCP/IP protocol route messages based on the IP address of the destination. The format of an IP address is a 32-bit numeric address written as four numbers separated by periods. Each number's range is from 0 to 255. For example, 1.160.10.240 could be a legal IP address.

ISDN

Abbreviation of integrated services digital network, an international communications standard for sending voice, video, and data over digital telephone lines. ISDN requires special metal wires and supports data transfer rates up to 64 Kbps (64,000 bits per second).

ISP

Short for Internet Service Provider, a company that provides access to the Internet. For a monthly fee, the service provider gives you a software package, username, password and access phone number. Equipped with a modem, you can then log on to the Internet and browse the World Wide Web and USENET, and send and receive e-mail.

Local Area Network (LAN)

A computer network that spans a relatively small area. Most LANs are confined to a single building or group of buildings. However, one LAN can be connected to other LANs over any distance via telephone lines and radio waves. A system of LANs connected in this way is called a wide-area network (WAN)

MAC Address

Short for Media Access Control address, a hardware address that uniquely identifies each node of a network. In IEEE 802 networks, the Data Link Control (DLC) layer of the OSI Reference Model is divided into two sublayers: the Logical Link Control (LLC) layer and the Media Access Control (MAC) layer. The MAC layer communicates directly with the network media. Consequently, each different type of network media requires a different MAC layer.

PPP

PPP (Point-to-Point protocol) is a communication protocol for transmitting information over analog telephone lines. A PPP account is a dial-up account used to access the Internet. It is a dial-up account that actually calls another computer to gain Internet access.

PAP/CHAP ISP

PAP stands for Password Authentication Protocol. CHAP means Challenge Handshake Authentication Protocol. Most ISPs use one or the other for user authentication. If your ISP does not support either of these two protocols, contact the ISP for login script. You have to key in the login script on the PalmRouter Elite.

TCP/IP

Acronym for Transmission Control Protocol/Internet Protocol. TCP/IP is a program consisting of two layers of protocols or languages used to control the flow of information over the Internet. The Transmission Control Protocol aids in packaging large files of information into smaller packets of data that are ready for transport. The second layer Internet Protocol controls the addressing system, in a sense determining where the data packets are sent.

Safety Precautions

1. Follow all warnings and instructions marked on the product.
2. Slots and openings on the device are provided for ventilation. To protect it from overheating, these openings must not be blocked or covered.
3. Do not subject the product to an environment that exceeds temperature and humidity specifications (even if it is not plugged in). This product should never be placed near or over a radiator or heat register, or in a built-in installation unless proper ventilation is provided.
4. Unplug this product from the wall outlet before cleaning. Do not use liquid cleaners or aerosol cleaners. Use a damp cloth for cleaning.
5. Do not place cords or cables where they may be walked on or tripped over.
6. Be sure to comply with any applicable local safety standards or regulations.
7. General purpose cables are provided with this product. Any cables or other requirements mandated by local authority are your responsibility.
8. Cables that are attached to devices in different locations that have different power sources and grounding may have hazardous voltage potentials. Consult a qualified electrical consultant before installing the product to see if this phenomenon exists and, if necessary, take corrective action.
9. Never touch annunciated telephone wires or terminals unless the line has been disconnected.
10. Avoid using telephone equipment or installing the product during an electrical storm.
11. Never install telephone jacks, lines, network cables, this product, or power connections in wet locations.
12. Never spill liquid of any kind on the product.

Copyright

Copyright © 1998 by this company. All rights reserved. No part of this documentation may be reproduced in any form or by any means or used to make any directive work (such as translation or transformation) without permission from Macsense Connectivity, Inc. Macsense Connectivity, Inc. reserves the right to revise this documentation and to make occasional changes in content without obligation to provide notification of such revision or change.

FCC Notice

This equipment has been tested and found to comply with the limits for a Class B digital device, pursuant to Part 15 of FCC Rules. These limits are designed to provide reasonable protection against harmful interference in a residential installation. This equipment generates, uses, and can radiate radio frequency energy and, if not installed and used in accordance with the instructions, may cause harmful interference to radio communications. However, there is not guarantee that interference will not occur in a particular installation. If this equipment does cause turning the equipment off and on, the user is encouraged to try to correct the interference by one or more of the following measures:

1. Reorient or relocate the receiving antenna.
2. Increase the distance between the equipment and the receiver.
3. Connect the equipment and the receiver to different outlets on separate circuits.
4. Consult the dealer or an experienced radio/television technician for help.