

PCI USB Adapter Card

User's Manual

NETWORKING THE FUTURE

Copyright

Copyright © 1999 by Macsense Connectivity, Inc. All rights reserved. No part of this documentation may be reproduced in any form or by any means, or used to make any derivative work (such as translation or transformation) without permission. Macsense reserves the right to revise this document or to make changes in content without obligation among manufacture to provide notification of such revision or changes.

FCC Warning

This equipment has been tested and found to comply with the limits for a Class B digital device, pursuant to Part 15 of the FCC Rules. These limits are designed to provide reasonable protection against harmful interference in a residential installation. This equipment generates radio frequencies that may cause interference with radio communications if not used in accordance with the instructions. However, there is no promise that interference will not happen in a particular installation. If this equipment does cause interference to radio or television reception, which can be determined by turning the equipment off and on, the user is encouraged to try to correct the interference by any of the following measures:

- Re-orient or move the receiving antenna.
- Increase the distance between the equipment and receiver.
- Connect the equipment to an outlet that is on a separate circuit from the one to which the receiver is connected.
- Consult the dealer or an experienced radio/TV technician for help.

You may use a through, shielded, twisted pair cable (Full Speed) or a through, unshielded, untwisted wire cable (Low Speed). For Type A or Type B connections.

CE Declaration of Conformance

This is to certify that the UP-200 is shielded against the generation of radio interference in accordance with the application of Council Directive 89/339/EEC on the approximation of the laws of the Member States relating to electromagnetic compatibility. Conformity is declared by the application of EN55022:1987 Class B

Trademarks

All companies, brands, and product names are trademarks or registered trademarks of their respective companies. Specifications subject to change without prior notice.

Introduction

This PCI USB Adapter Card allows you to easily connect USB devices to your computer. This card has two USB ports allowing you to simultaneously connect two USB devices directly to your computer (or connect multiple devices through a USB hub). You can connect USB-equipped game controllers, mice, printers, cameras and more with this card.

System Requirements

This PCI USB Adapter Card must meet the following criteria to function normally and correctly with the user's computer:

For PC:

- PCI equipped PC computer
- Windows 98 Revision 2

For Macintosh:

- PCI equipped Macintosh
- MacOS 8.5.1 or later with PCI USB Adapter Card Extension 1.2 or higher installed

(**NOTE:** USB Adapter Card Extension 1.2 can be found on Apple's Web site at <http://asu.info.apple.com/swupdates.nsf/artnum/n11487?Open Document>)

Software Installation

For Macintosh:

To use this USB PCI card with your Macintosh, you must have USB Adapter Card Extension installed on your computer. This extension allows the operating system to recognize the USB PCI card. If you do not already have this software, please download this software from Apple's Web site at:

<http://asu.info.apple.com/swupdates.nsf/artnum/n11487?OpenDocment>

To install Apple's USB Adapter Card Support, follow these steps:

1. Double-click the **Apple SW Install icon** to start the installation process.
2. Choose **Recommended Installation** and click **Start** to install the USB Adapter Card Support software in the extensions folder of your startup disk. USB Adapter Card Support requires Mac OS 8.5.1 or later.
3. Restart your computer when prompted by your computer. (This prompt occurs once the installation is complete.)
4. After your computer is restarted, the USB Adapter Card Support software is ready for use.

For PCs

Software installation is not necessary for PC users for this USB PCI card. However, you must have Windows 98 Revision 2 installed. Windows 98 Revision 2 has the appropriate software built-in to enable the operating system to recognize the USB PCI card

Hardware Installation

Follow the steps below for easy installation:

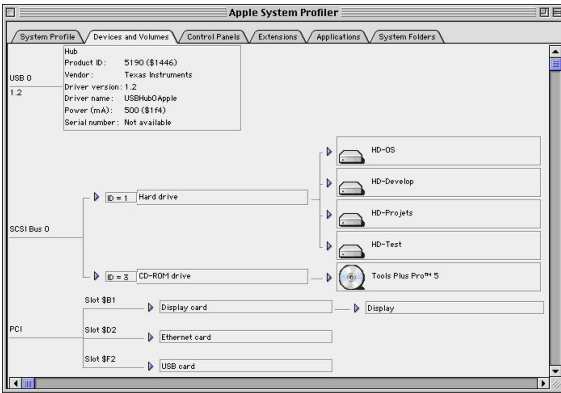
1. Unpack the PCI USB Adapter Card package.
2. Turn off the computer.
3. Remove the cover of the your Mac or PC.
4. Install the PCI USB Host Card into a vacant PCI Slot.
5. Replace the Mac's or PC's cover.

If a problem arises while installing this PCI USB Adapter Card, please confirm that the card is firmly seated in the PCI slot. If the PCI USB Adapter Card still cannot function properly, please verify that your computer meets the system requirements listed on the previous page.

Installation Verification for Macintosh

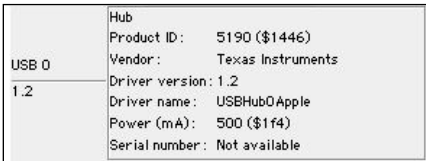
To verify that your USB PCI card has been properly installed on your Macintosh, follow the instructions listed below:

1. Select **Apple System Profiler** from the **Apple Menu**.
2. Select **Devices and Volumes**.



(Fig-1)

3. Check to see whether:
 - USB 0 1.2 (Fig-2) and



(Fig-2)

- USB Card (Fig-3) are available in the PCI Section.



(Fig-3)

(NOTE: Absence of these items in the Apple System Profiler window indicates a failed installation configuration. Please retry installing the software and hardware.)