



Macsense AeroLite Quick Start Guide

INTRODUCTION

Congratulations on purchasing the Macsense AeroLite. The AeroLite 802.11g USB Adapter is a plug and play 54Mbps USB network adapter that works with any USB-ready Macintosh computer. With AeroLite, you can share data, printers, and access high-speed Internet over your wireless network. The AeroLite can send and receive data up to speed of 54Mbps and is fully compatible with AirPort Extreme and AirPort Express Base Stations.

This Quick Installation Guide is designed to facilitate easy installation for Apple Mac OS X.

The AeroLite has **drivers** for Mac OS 10.3/10.4, Windows 2000, and XP. The complete driver and utility is on the AeroLite CD.

Remember to **register** your product so you're informed of future upgrades and product information. Please go to <http://www.macsense.com/registration> to register online.

BEFORE YOU START

Package Contents:

- One AeroLite USB Adapter
- One Installer CD-ROM
- One Mac and PC Quick Start Guide

Setup Requirements:

- Power Macintosh, iMac, iBook, and PowerBook with an USB port
- One available USB port
- Mac OS 10.3/10.4
- Apple AirPort base stations, or any 802.11b/g-compliant access points or wireless router.

Note: You will need to know the Network Name (SSID) and encryption key of the wireless network you're connecting to in order to configure your AeroLite.

INSTALLATION

You must first install the drivers before the Mac OS X will recognize the AeroLite adapter.

To Install Drivers:

Follow steps below to install the driver properly:

1. Depending on the version of your Mac OS X (10.3 or 10.4 and above), run the appropriate AeroLite installer. This will install the necessary drivers.
2. Restart the computer to complete the install process.
3. Plug-in the AeroLite adapter firmly into an available USB

port before the system is turned on or anytime after the system is fully booted up. It is recommended that AeroLite be connected directly to the onboard USB port, and not to a USB hub (on keyboard, monitor, or attached hub). Sometimes hubs do not provide enough power for the AeroLite to work properly.

4. After the restart process, open **Network** from the System Preferences window. A dialog will alert you that a New Port has just been detected.



5. In the **Show** menu, select **Ethernet Adaptor (enXX)**, where XX is any arbitrary numeric number. This is the hardware name that represents the AeroLite adapter to your Mac OS X.



6. Open the **TCP/IP** tab. In the **Configure** pull-down menu, select **Using DHCP Server** to allow the DHCP server on the network to dynamically assign IP addressing
7. Close the Network window and save the changes.

8. Open the **AeroLite** configuration utility application to begin configuration. The **AeroLite** configuration utility application can be found in the Utilities folder under the Applications folder.



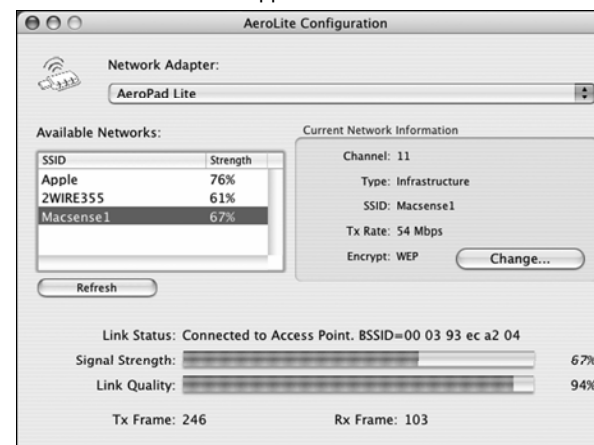
To Remove Drivers:

If there is ever need to remove the drivers, follow the steps below.

1. Unplug the AeroLite adapter from your USB port.
2. Run the **AeroLite Uninstaller** provided in the CD and follow the steps.
3. Restart the computer to complete the uninstall process.

AEROLITE UTILITY

The **AeroLite** configuration utility application is what you will use to setup your AeroLite to connect to your wireless network. The **AeroLite** configuration utility application can be found in the Utilities folder under the Applications folder.



The window has three separate sections: **Available Networks**, **Current Network Information** and **Link status**.

AVAILABLE NETWORKS

The first section is the **Available Networks**. This box displays the current networks and shows you the signal strength of the

networks. You can connect to any networks in this box providing you know the settings of that network.

- **SSID:** This column lists the name of each network that the AeroLite is detecting within range.
- **Strength:** This column lists the signal strength of each network. The higher the percentage, the better the connection will be.
- **Refresh:** Click this button to refresh the current list of Available Networks.

AeroLite supports switching the Network on-the-fly. You can associate to a different base station by changing the SSID. The re-association occurs momentarily and does not require a reboot.

CURRENT NETWORK INFORMATION

The second section is **Current Network Information**. This displays information about the network that the AeroLite is currently connected to.

- **Channel:** Displays the channel of the selected network
- **SSID:** Displays the Network Name or SSID of the selected network
- **TX Rate:** Displays the transfer rate of the selected network, either 11Mbps or 54Mbps
- **Encrypt:** Displays the type of encryption scheme used (if any), either WEP or WPA.
- **Change Button:** This is where you manually configure your network settings such as Network Name/SSID, WEP settings, and Network Type.

LINK STATUS

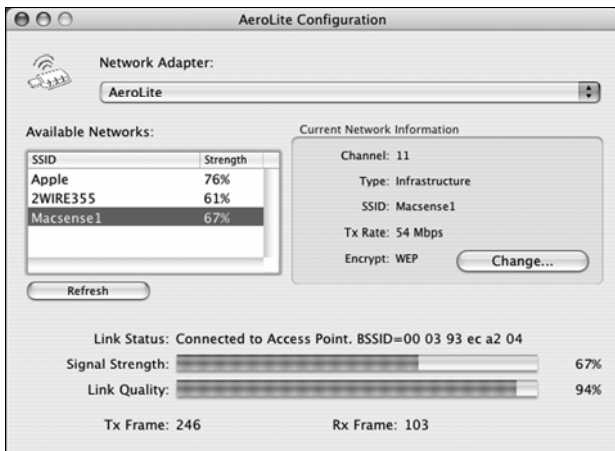
The third section is **Link Status**.

- **Link Status:** Displays the MAC Address of the selected Base Station.
- **Signal Strength:** Displays the strength of the current connection.
- **Tx Frame:** Displays how many packets were sent out to the base station.
- **Rx Frame:** Displays how many packets were received from the base station.

CONFIGURATION

After you have installed the driver and made the TCP/IP settings for the AeroLite, then you are ready to configure the AeroLite to connect to your wireless network.

There are two general ways of connecting to an existing wireless network, One easy way is to select from an available network list, and the other way is to enter the wireless network settings manually. Both methods are explained below,



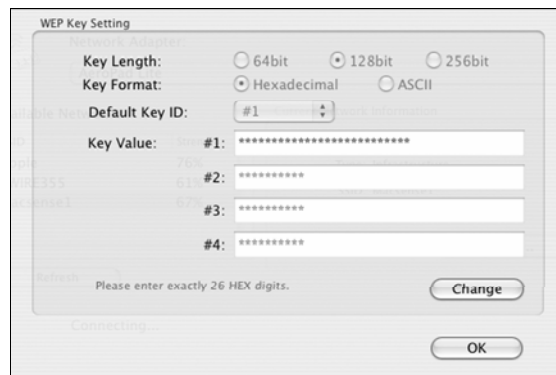
METHOD #1: To connect to an existing network,

1. Open the **AeroLite Configuration** window. (If the **AeroLite** configuration utility is already running but the **AeroLite** Configuration window does not show, go to the **Setup** menu and select **Open setup window** menu item, and this will re-open the **AeroLite Configuration** window.)
2. All available networks will be listed under the **Available Networks** section on the left side of the window.

Note: The Available Networks section will show all available base stations that are broadcasting within range. Some base stations have been configured to not broadcast the SSID for security reasons, so you will not be able to see these networks listed. You will need to enter the SSID manually.

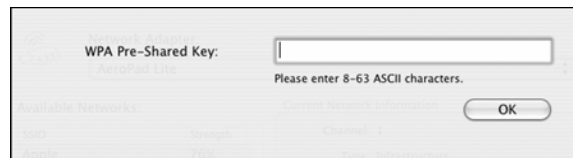
3. Select the network that you want to connect to and double click it to connect to it. If the selected network has no Encryption then you will be connected to the network instantly. Go to step 7.
4. If the network you want to connect to has encryption enabled, then as soon as the AeroLite tries to connect to it, a dialog box will appear.

5. If the network has WEP encryption, a **WEP Key Setting** dialog box will appear. This is where you will set your encryption settings for your network.



When this dialog box first appears, all fields will be locked. Click the **Change** button to unlock the fields. Enter the settings,

- **Key Length:** Select either **64**, **128** or **256**-bit encryption depending on your network settings. 64-bit key is 5 characters in ASCII form or 10 characters in Hex form, 128-bit key is 13 characters in ASCII or 26 characters in Hex or 256-bit key is 29 characters in ASCII or 58 characters in Hex.
 - **Key Format:** Select either **Hexadecimal** or **ASCII**.
 - **Default Key ID:** The WEP key is entered in either one of the four the key slots. The slot number that is selected has to match the WEP key slot defined in the access point. If you are using an Apple AirPort Extreme or AirPort Express Base Station then select Key ID #1.
 - **Key Value:** Enter the actual WEP key in the appropriate slot.
6. If the network has WPA encryption, then you will get the following dialog box.



Enter the WPA key in the WPA Pre-Shared Key field. A WPA key is 8-63 ASCII characters.

7. Click the **OK** button to exit to the **AeroLite Configuration** window. Check the Link Status section to see you're now connected. The selected network should now show a strong signal strength and link quality.
8. Now the settings are complete. Close the **AeroLite Configuration** window, and you can begin to access the network.

METHOD #2: To enter wireless network settings manually,

If the network you're trying to connect to is hidden or if you rather enter the wireless network settings manually, then following the steps below,

1. Open the **AeroLite Configuration** window.
2. Click the **Change** button in the **Current Network Information** section on the right side of the window, a **Basic Settings** window appears.



3. Click the **Change** button in the **Basic Settings** window to unlock the fields. Type the **SSID (or Network Name)** in the **SSID** field. Make sure the spelling is correct. (SSID is case sensitive and should not include any blank space.)
4. Pull down the **Encryptions** menu and select the appropriate item, either **WEP**, **TKIP**, or **AES**.
5. Pull down the **Authentication** menu and select the appropriate item, either **Open System**, **Shared Key**, **Auto**, **WPA PSK**, or **WPA2 PSK**.
6. Click the **Apply** button to save your changes.
7. Next, under the **Encryption Setting** section, click on the **WEP Encryption** button. Here you will enter either your WEP Key or your WPA key. Click the **Apply** button to save your changes. Then click the **OK** button at the bottom to close the window.
8. Now the settings are complete. Close the **AeroLite Configuration** window, and begin to access the network.

TROUBLESHOOTING

AeroLite adapter does not get detected (no new port) in the Network System Preference.

1. Check to make sure that the AeroLite adaptor is fully inserted in the USB port, and a green light flashes once upon insertion. AeroLite should be connected directly to the onboard USB port, and not to a USB hub (on keyboard, monitor, or attached hub). Sometimes hubs do not provide enough power for the AeroLite to work properly.
2. Re-install the AeroLite drivers. Verify that you are choosing the correct driver for your OS version (10.3 or 10.4 and above).

The Available Networks box in the AeroLite configuration utility does not show my network.

1. Click the "Refresh" button again to re-scan available networks, as some base stations may not broadcast its name continuously.
2. Make sure you are within range of your wireless network. Check to see that the base station is functioning correctly. In some cases if there are a lot networks in the same area, this can cause interference and not allow your network to show up. Try to get closer to the base station.

I have selected the network using the AeroLite configuration utility, but I can not get online.

Check your Network System Preference to make sure the TCP/IP settings are configured correctly. If the network you are trying to connect is encrypted (WEP or WPA encryption), you will be prompted to enter a key/password to join the network. Make sure the key/password is entered correctly, digit by digit, before you submit, because the AeroLite Configuration utility will not alert you that the key is incorrect.

AeroLite Configuration utility shows that the selected network is "Connecting" but I still can not get online.

Leave the AeroLite Configuration window open, remove the AeroLite adapter and re-insert it again. The AeroLite Configuration will re-connect to the selected network.

AeroLite seems to transfer files more slowly than expected.

AeroLite adapter is cable of 54Mbps maximum throughput. Its actual transfer rate, however, is limited by the wireless network quality (e.g. range, interference), and USB port speed (USB 1.1 vs USB 2.0).

Contact Information

Xsense Connectivity Inc.
dba Macsense Connectivity
Technical Support
support@macsense.com
www.macsense.com/knowledgebase